



**2203/38 Albert Road South Melbourne VIC**

2 1 1

Perfectly positioned in Melbourne's Domain Precinct lies this designer apartment with a panoramic view from the 22nd floor in the striking Albert Tower building, less than 2km to the CBD.

This luxury 2-bedroom apartment comes with a secure car space and features an expansive open-plan living and dining space back dropped by the view, stunning architecture with an exceptional city-edge lifestyle.

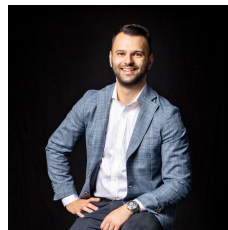
The piece-de-resistance is a bold L-shaped floor plan that embraces a sweeping, sky-high north-facing view over the cityscape below.

Gaze through curved glass windows at the glorious green of the Royal Botanic Gardens, at the Shrine of Remembrance, the MCG, AAMI Park and much more.

This 'live, work and play' position is steps to the Royal Botanic Gardens, the Tan Track, the Metro tunnel project's Anzac Station, St Kilda Road trams, Albert Park Lake,

**Price** : \$ 500,000

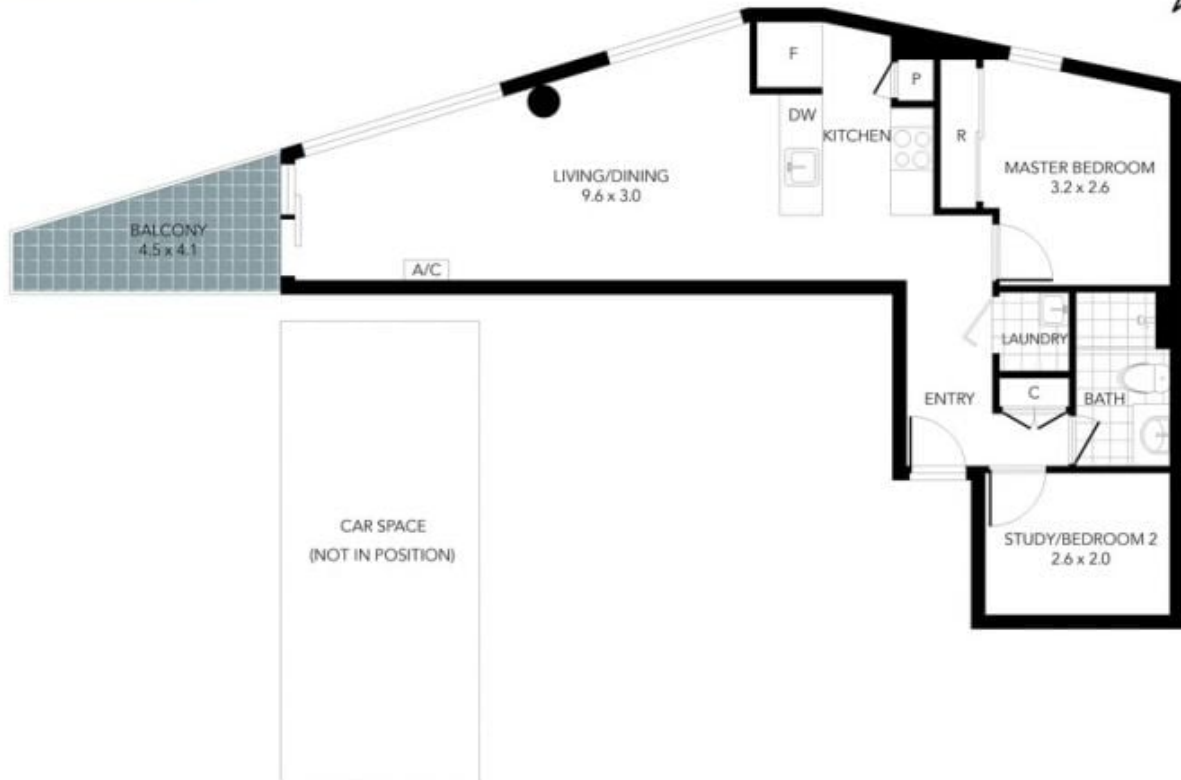
**View** : <https://www.innerrealestate.com.au/sale/vic/inner-city/south-melbourne/residential/apartment/6139514>



**Anthony Cimino**  
+61 3 9804 5551



**Jonathan Mallas**  
+61 3 9804 5551



THIS FLOOR PLAN IS NOT TO SCALE. MEASUREMENTS ARE INDICATIVE AND IN METRES. VEGETATION IS PLACED FOR ILLUSTRATIVE PURPOSES ONLY.  
THIS PLAN SHOULD NOT BE RELIED UPON. INTERESTED PARTIES SHOULD MAKE THEIR OWN ENQUIRIES.



THIS FLOOR PLAN IS NOT TO SCALE. MEASUREMENTS ARE INDICATIVE AND IN METRES. VEGETATION IS PLACED FOR ILLUSTRATIVE PURPOSES ONLY.  
THIS PLAN SHOULD NOT BE RELIED UPON. INTERESTED PARTIES SHOULD MAKE THEIR OWN ENQUIRIES.