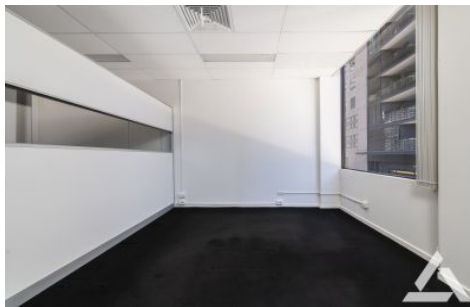




# INNER REAL ESTATE

## NEXTRE



### 29/37-39 Albert Road Melbourne VIC

A wonderful opportunity to go back to working from the office. This office is situated in a low rise complex where you don't have to share or wait for an elevator and where social distancing will not impact your day to day working environment.

This amazing office space, partially fitted out, great escape from working at home. This office space is nestled in this highly sought after Albert Square location and only metres from St Kilda Road, Kings Way, Domain Junction and the major arterial roads.

Rent negotiable and flexible terms.

- Two-level office suite located within a secure business complex
- Open Plan area, full natural light
- Kitchenette

**Building Size** : 90 sqm

**View** : <https://www.innerrealestate.com.au/lease/vic/inner-city/melbourne/commercial/offices/6139548>



**Sandra Cimino**  
0398045551