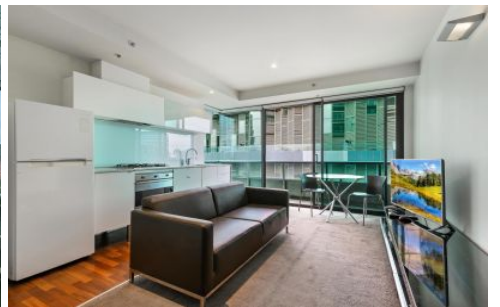




INNER REAL ESTATE NEXTRE



1208/280 Spencer Street Melbourne VIC

1 1

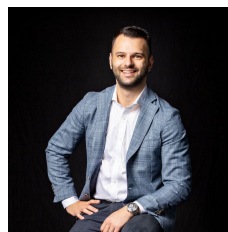
Convenience and class pair to perfection with this sleek inner-city apartment in the 'Mondriane', on Melbourne's iconic Spencer Street.

This prime position is walking distance to an array of Melbourne City landmarks, from Marvel Stadium and Flagstaff Gardens to Southern Cross Station and the Queen Victoria Market.

Trams pass paces away and Coles rests opposite, leaving little need for a vehicle in this access-all-areas location, whether for work, study or leisure.

The interior reflects relaxed modern style. It features an open-plan living and meals area, and a marble-topped kitchen dressed in Smeg stainless steel appliances including a gas cooktop.

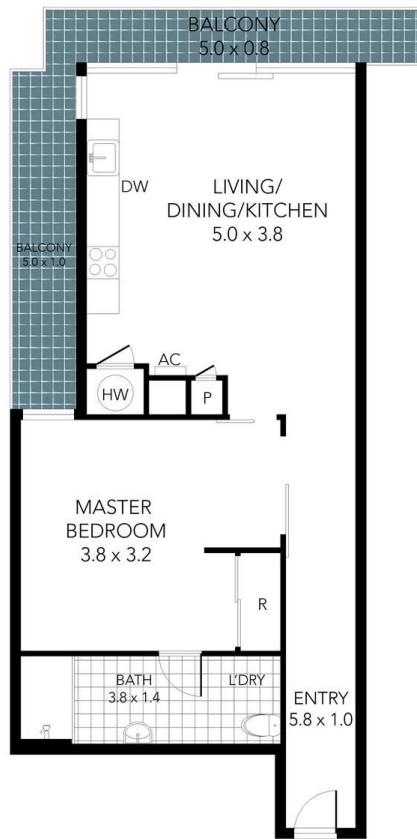
Price : \$ 290,000
Building Size : 56 sqm
View : <https://www.innerrealestate.com.au/sale/vic/inner-city/melbourne/residential/apartment/6148640>



Anthony Cimino
+61 3 9804 5551



Jonathan Mallas
+61 3 9804 5551



THIS FLOOR PLAN IS NOT TO SCALE. MEASUREMENTS ARE INDICATIVE AND IN METRES. VEGETATION IS PLACED FOR ILLUSTRATIVE PURPOSES ONLY.
THIS PLAN SHOULD NOT BE RELIED UPON. INTERESTED PARTIES SHOULD MAKE THEIR OWN ENQUIRIES.



THIS FLOOR PLAN IS NOT TO SCALE. MEASUREMENTS ARE INDICATIVE AND IN METRES. VEGETATION IS PLACED FOR ILLUSTRATIVE PURPOSES ONLY.
THIS PLAN SHOULD NOT BE RELIED UPON. INTERESTED PARTIES SHOULD MAKE THEIR OWN ENQUIRIES.