



1202/594 St Kilda Road Melbourne VIC

2 1 1

Positioned above Melbourne's iconic St Kilda Road and showcasing a view of Albert Park Lake, this modern apartment with a secure car park takes city-edge living to the next level.

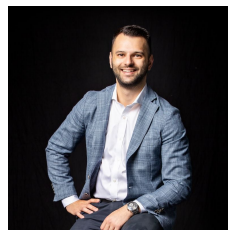
This 2-bedroom domain rests in the Alto on the Boulevard building, prized for its accessibility, amenities and modern spaces.

It's walking distance to Albert Park Lake, steps to trams, and within easy reach of the CBD, Fitzroy Street, Chapel Street, MSAC, Albert Park Golf Course, Fawkner Park, the beach and much more.

The interior features a stone kitchen, a light-filled living space with air-conditioning, and a northerly-facing balcony capturing a scenic Albert Park outlook.

A fresh and inviting interior begins with a generous kitchen comprising a glass gas cooktop, a pyrolytic oven and a Bosch dishwasher.

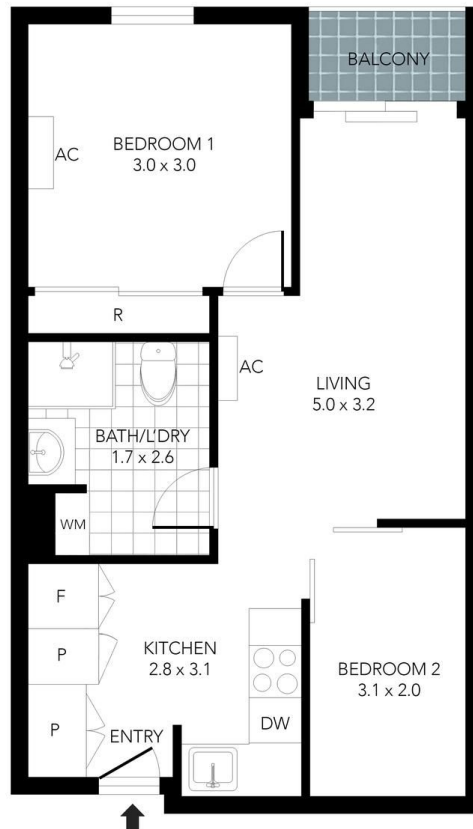
Price : \$ 425,000
Building Size : 50 sqm
View : <https://www.innerrealestate.com.au/sale/vic/inner-city/melbourne/residential/apartment/6162944>



Anthony Cimino
+61 3 9804 5551



THIS FLOOR PLAN IS NOT TO SCALE. MEASUREMENTS ARE INDICATIVE AND IN METRES. VEGETATION IS PLACED FOR ILLUSTRATIVE PURPOSES ONLY.
THIS PLAN SHOULD NOT BE RELIED UPON. INTERESTED PARTIES SHOULD MAKE THEIR OWN ENQUIRIES.



SECURE CAR
SPACE

THIS FLOOR PLAN IS NOT TO SCALE. MEASUREMENTS ARE INDICATIVE AND IN METRES. VEGETATION IS PLACED FOR ILLUSTRATIVE PURPOSES ONLY.
THIS PLAN SHOULD NOT BE RELIED UPON. INTERESTED PARTIES SHOULD MAKE THEIR OWN ENQUIRIES.