



**INNER REAL ESTATE  
NEXTRE**

### Private Inspections Made Easy

- Book**  
Click "Book an Inspection Time" to select a time. Alternatively click "Contact Agent" and you will be sent a link to the online booking system.
- Inspect**  
Our friendly team of Sales and Leasing agents will take you on a private inspection of the property at a time that suits your lifestyle.
- Update**  
By registering you confirm your place at the inspection. You will immediately be informed of any changes and updates to the property including price.



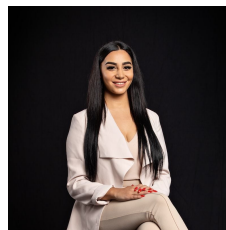
**5/28 Ellesmere Road Windsor VIC**

2 1 1

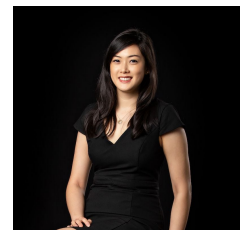
Delightful, airy and ambient, this ground floor two-bedroom art deco inspired apartment invites tenants to experience a lifestyle of convenience, comfort and ease. Ideally positioned just a short walk to Windsor train station for your daily commute, you are just around the corner from Chapel Street's heady mix of retail fun and cosmopolitan cafes - and just a little further to the perennially popular Prahran Market and groovy Greville St.

From an era renowned for its enduring appeal with the added effect of high ceilings and beautiful timber floors, this timeless design for practical life delivers a spacious main living room with an open fire place which provides a separate meals area adjacent to the smartly updated kitchen. Furthermore, the property features a private, sunny, plant-lined entrance courtyard for exclusive use and enjoyment by the tenants.

**View :** <https://www.innerrealestate.com.au/lease/vic/inner-city/windsor/residential/apartment/6193089>



**Maha Yehia**  
0448 019 444



**Jane Wong**  
0418 511 885