



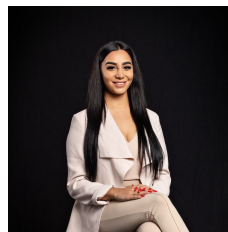
**505/118 Russell Street Melbourne VIC**

**2 1**

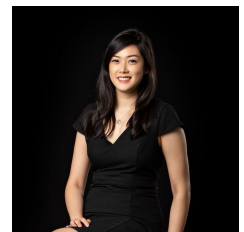
**Don't miss out on this stunning apartment!**

**View :** <https://www.innerrealestate.com.au/lease/vic/inner-city/melbourne/residential/apartment/6231510>

This two bedroom apartment features open plan living and dining area, built in wardrobes, reverse cycling heating/cooling and modern appliances. Located in the heart of all the theatre precinct, restaurants, bars, cafes and Chinatown, this is the ideal apartment who loves to stay in Melbourne CBD.



**Maha Yehia**  
**0448 019 444**



**Jane Wong**  
**0418 511 885**