



**INNER REAL ESTATE
NEXTRE**

Private Inspections Made Easy

- Book**
Click "Book an Inspection Time" to select a time. Alternatively click "Contact Agent" and you will be sent a link to the online booking system.
- Inspect**
Our friendly team of Sales and Leasing agents will take you on a private inspection of the property at a time that suits your schedule.
- Update**
By registering you confirm your place at the inspection. You will immediately be informed of any changes and updates to the property including price.



905/555 Flinders Street Melbourne VIC

1 1

Auction registration link:
<https://portal.bidtracker.com.au/auctions/e84ba9ee-fe29-49da-b140-97ea361f2ad8/register-bidder/>

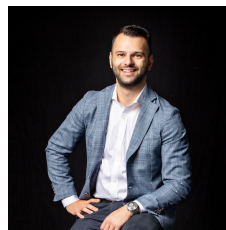
Price : \$ 295,000
View : <https://www.innerrealestate.com.au/sale/vic/inner-city/melbourne/residential/apartment/6232476>

Close to Southbank and the Docklands, and by the banks of the Yarra River, this Northbank Place apartment offers prime inner-city Melbourne living.

This is one of the CBD's most accessible locations, prized for its proximity to trams and trains, city workplaces, riverside dining, South Wharf, universities, Crown Casino and more.

It rests high above Melbourne's iconic Flinders Street, with floor-to-ceiling north-facing louvered windows that soak up the city surrounds.

The interior features a window-walled kitchen, open-plan meals and living, and a generous bedroom with a mirrored built-in robe.



Anthony Cimino
+61 3 9804 5551



Jonathan Mallas
+61 3 9804 5551



THIS FLOOR PLAN IS NOT TO SCALE. MEASUREMENTS ARE INDICATIVE AND IN METRES. VEGETATION IS PLACED FOR ILLUSTRATIVE PURPOSES ONLY.
THIS PLAN SHOULD NOT BE RELIED UPON. INTERESTED PARTIES SHOULD MAKE THEIR OWN ENQUIRIES.



THIS FLOOR PLAN IS NOT TO SCALE. MEASUREMENTS ARE INDICATIVE AND IN METRES. VEGETATION IS PLACED FOR ILLUSTRATIVE PURPOSES ONLY.
THIS PLAN SHOULD NOT BE RELIED UPON. INTERESTED PARTIES SHOULD MAKE THEIR OWN ENQUIRIES.