



# INNER REAL ESTATE NEXTRE



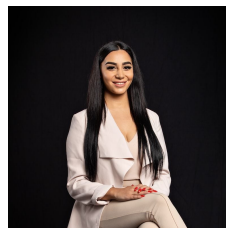
**113/130 Dudley Street West Melbourne VIC**

1 1

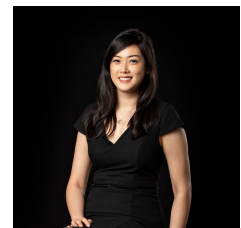
This apartment offers spacious bedroom, open plan living & dining, split system heating & cooling, kitchen equipped with dishwasher, gas cooktop & oven, and balcony.

Located within walking distance to the CBD, Flagstaff Garden, Flagstaff & North Melbourne Train Stations, and Queen Victoria Market. This apartment is perfect to give you the convenience of the city but also a place of tranquillity.

**View :** <https://www.innerrealestate.com.au/lease/vic/inner-city/west-melbourne/residential/apartment/6246602>



**Maha Yehia**  
0448 019 444



**Jane Wong**  
0418 511 885