



# INNER REAL ESTATE NEXTRE

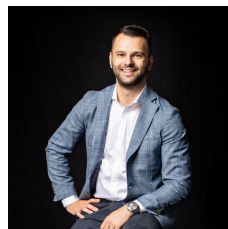


## 1915/39 Coventry Street Southbank VIC

1 1

Situated in 'The Guilfoyle' premier lifestyle complex, designed by SJB Architects, this Scandinavian-inspired apartment showcases clean lines and a contrasting colour scheme, infused with natural light. Comprising a spacious living area enhanced with plush charcoal carpets, spilling out to the full-width balcony offering stunning views. A state-of-the-art kitchen, resplendent with stone benchtops, stainless-steel appliances, and colour-matched dishwasher, one generous bedroom with built-in robe and ensuite effect to the modern bathroom, and a European laundry complete this stylish apartment.

**View :** <https://www.innerrealestate.com.au/sale/vic/inner-city/southbank/residential/apartment/6279175>



**Anthony Cimino**  
+61 3 9804 5551



**Jordan Bracegirdle**  
0428 967 571

- ? Prime location nestled between the Royal Botanical Gardens, Victorian College of the Arts, and Southbank
- ? Short walking distance to St Kilda Road trams
- ? Stainless steel appliances

<https://www.innerrealestate.com.au>

