



INNER REAL ESTATE NEXTRE



1/10 Larbert Road Noble Park VIC

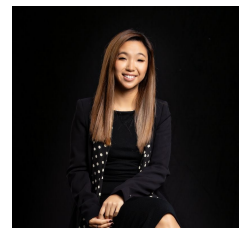
1 1 1

This renovated one bedroom is a renter's dream! The property features a bathroom and kitchen stocked with high end stainless steel oven, range hood and electric cook top. This apartment an abundance of storage space, an open living area, a large built-in wardrobe all covered with polished floorboards. Located beautifully and just minutes away from Noble Park's main shopping district and train station. An inspection will not disappoint! *Generic Photos used*

View : <https://www.innerrealestate.com.au/lease/vic/south-east/noble-park/residential/unit/6319342>



Jordan Bracegirdle
0428 967 571



Hayley Tran
+61 3 9804 5551