



1302/222 Russell Street Melbourne VIC

1

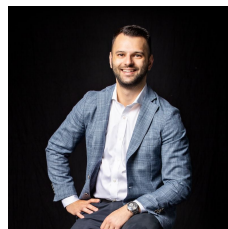
A well-equipped apartment in the heart of Melbourne's CBD, this Mantra on Russell serviced studio is a first-class investment. This north-facing studio is currently returning \$18,830 (approx) per annum, making this ideal for the experienced investor looking to add to their growing portfolio or for a first-time investment opportunity.

View : <https://www.innerrealestate.com.au/sale/vic/inner-city/melbourne/residential/studio/6327651>

- ? North-facing apartment with a city view
- ? Spacious, plush living/bedroom
- ? Fully-tiled bathroom with a bathtub
- ? Neat kitchenette
- ? Walk to free city trams
- ? Walk to QV Melbourne, Emporium Melbourne
- ? Walk to Bourke Street Mall and much more

FACILITIES:

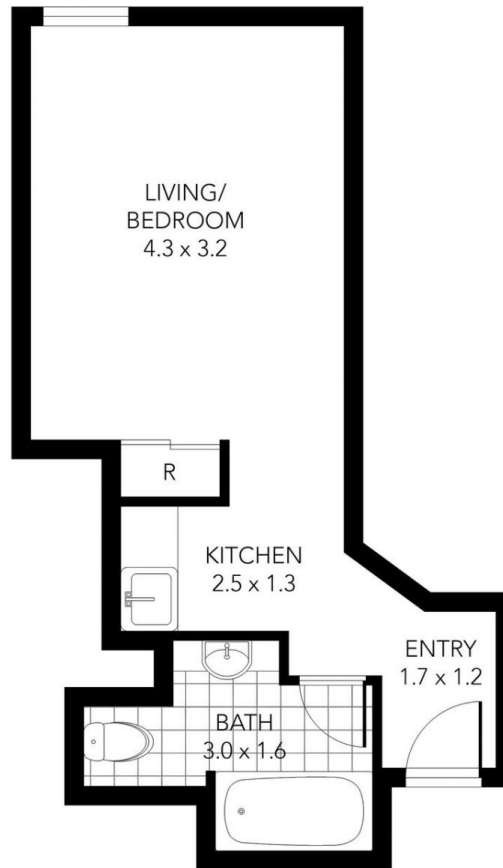
- ? 24-hour room service



Anthony Cimino
+61 3 9804 5551



Jonathan Mallas
+61 3 9804 5551



THIS FLOOR PLAN IS NOT TO SCALE. MEASUREMENTS ARE INDICATIVE AND IN METRES. VEGETATION IS PLACED FOR ILLUSTRATIVE PURPOSES ONLY.
THIS PLAN SHOULD NOT BE RELIED UPON. INTERESTED PARTIES SHOULD MAKE THEIR OWN ENQUIRIES.



THIS FLOOR PLAN IS NOT TO SCALE. MEASUREMENTS ARE INDICATIVE AND IN METRES. VEGETATION IS PLACED FOR ILLUSTRATIVE PURPOSES ONLY.
THIS PLAN SHOULD NOT BE RELIED UPON. INTERESTED PARTIES SHOULD MAKE THEIR OWN ENQUIRIES.