

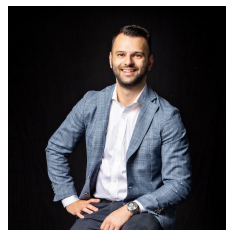


**133/461 St Kilda Road Melbourne VIC**

3 2 2

Unveiling a sky-high lifestyle of leisure and luxury towering above Melbourne's most iconic boulevard and gazing at the bay, this prestige 'Kingstoun' apartment is a masterclass in city sophistication. Be spoiled by the direct access to one of Melbourne's premier parks, and delighted by the sea-meets-sky views of Port Phillip Bay, stretching above the blue and green hues of Albert Park Lake. This apartment embodies the esteem within which the 'Kingstoun' is held, where oversized floorplans pair with panoramic views, premium finishes and, of course, proximity to one of the world's most liveable cities.

**View** : <https://www.innerrealestate.com.au/sale/vic/inner-city/melbourne/residential/apartment/6343959>



**Anthony Cimino**  
+61 3 9804 5551



**Jonathan Mallas**  
+61 3 9804 5551

**Highlights:**

- ? Luxury oversized interior
- ? Backing directly onto Fawkner Park
- ? Includes 2 secure car spaces
- ? Port Phillip Bay and Albert Park Lake views



(Not In Position)

THIS FLOOR PLAN IS NOT TO SCALE. MEASUREMENTS ARE INDICATIVE AND IN METRES. VEGETATION IS PLACED FOR ILLUSTRATIVE PURPOSES ONLY. THIS PLAN SHOULD NOT BE RELIED UPON. INTERESTED PARTIES SHOULD MAKE THEIR OWN ENQUIRIES.



(Not In Position)

THIS FLOOR PLAN IS NOT TO SCALE. MEASUREMENTS ARE INDICATIVE AND IN METRES. VEGETATION IS PLACED FOR ILLUSTRATIVE PURPOSES ONLY. THIS PLAN SHOULD NOT BE RELIED UPON. INTERESTED PARTIES SHOULD MAKE THEIR OWN ENQUIRIES.