



INNER REAL ESTATE NEXTRE



2102/22 Dorcas Street Southbank VIC

2 2 2

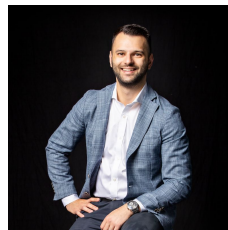
Modern design, verdant green spaces and stunning views extending from the Shrine to Port Phillip Bay unite in this premium apartment in the Elenberg Fraser-designed Elm building. This sophisticated city pad speaks to the lifestyle seeker, offering easy access to St Kilda Road, city trams and bus stops, cafes and the green expanses of Albert Park and the Royal Botanic Gardens, when leisure time calls. Resort-style amenities including a podium garden provide the perfect backdrop for downtime, cocooned in the Elm's signature nature surrounds.

Highlights:

- ? Spacious 2-bedroom, 2-bathroom apartment with 2 secure car spaces
- ? Premium location steps to St Kilda Road and the Royal Botanic Gardens
- ? Walking distance to tram stops, bus stops, and the Tan

Building Size : 80 sqm
View

: <https://www.innerrealestate.com.au/sale/vic/inner-city/southbank/residential/apartment/6345614>



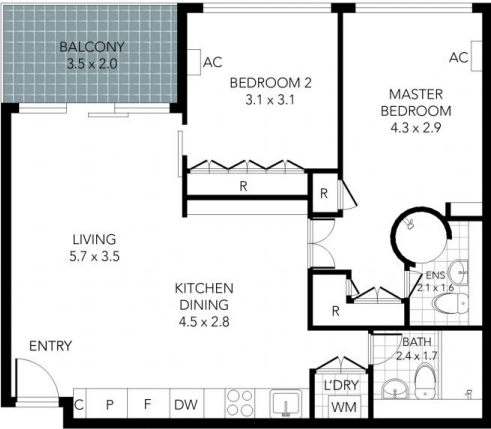
Anthony Cimino
+61 3 9804 5551



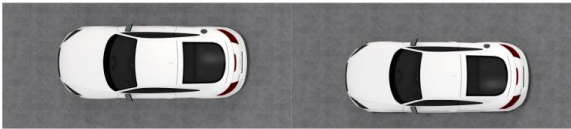
Jonathan Mallas
+61 3 9804 5551



(NOT IN POSITION)



THIS FLOOR PLAN IS NOT TO SCALE. MEASUREMENTS ARE INDICATIVE AND IN METRES. VEGETATION IS PLACED FOR ILLUSTRATIVE PURPOSES ONLY.
THIS PLAN SHOULD NOT BE RELIED UPON. INTERESTED PARTIES SHOULD MAKE THEIR OWN ENQUIRIES.



THIS FLOOR PLAN IS NOT TO SCALE. MEASUREMENTS ARE INDICATIVE AND IN METRES. VEGETATION IS PLACED FOR ILLUSTRATIVE PURPOSES ONLY.
THIS PLAN SHOULD NOT BE RELIED UPON. INTERESTED PARTIES SHOULD MAKE THEIR OWN ENQUIRIES.