



INNER REAL ESTATE

NEXTRE



8/18 Queens Road Melbourne VIC

2 1 1

Access via Queens Lane

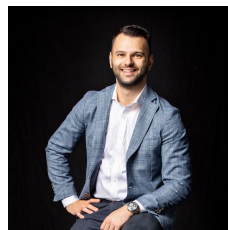
Period-style grace and a premier city position unite with this grand ground-floor apartment in Melbourne's landmark Lancaster House, complete with a study and a secure car space. This is a city sanctuary like no other, privately nestled at the rear of a heritage-style building in one of Melbourne's premium leisure settings, directly opposite Albert Park Lake, steps to Fawkner Park, and just over 2km to the CBD.

? Elegant ground-floor apartment with tranquil garden outlooks

? Secure single garage with rear entry via Queens Lane

? Prestigious position opposite Albert Park Lake and Golf Course

View : <https://www.innerrealestate.com.au/sale/vic/inner-city/melbourne/residential/apartment/6355152>

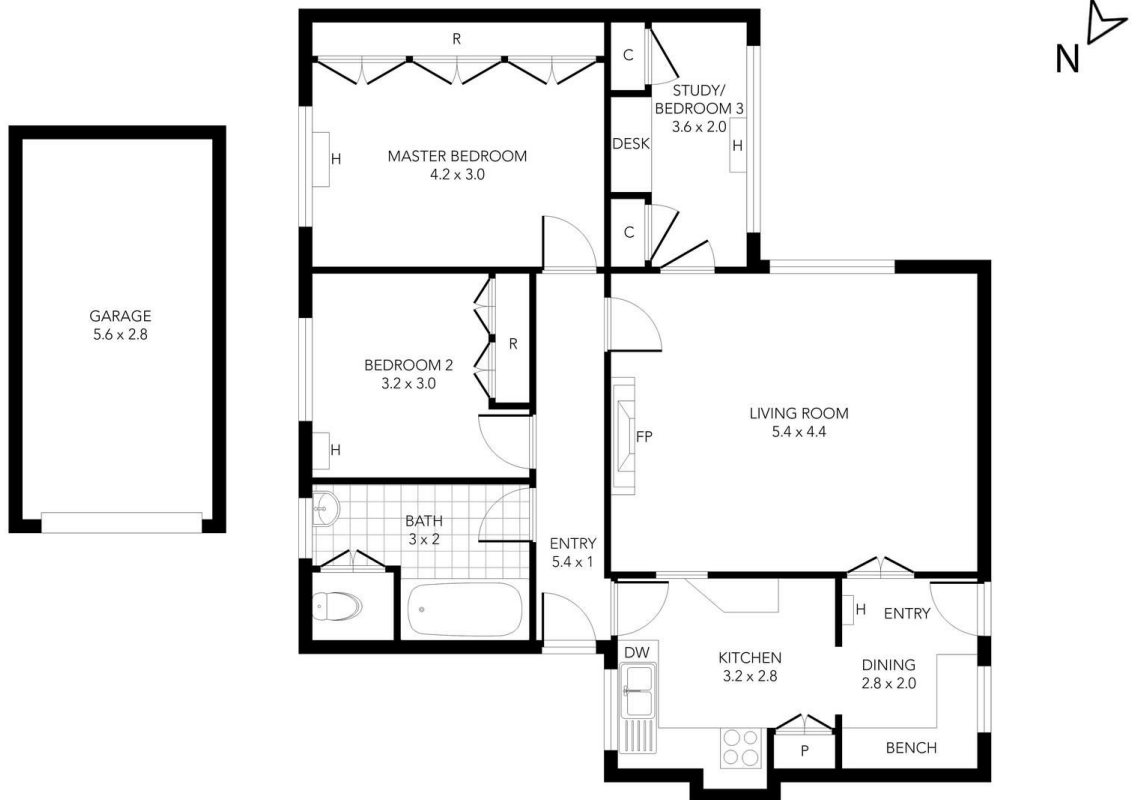


Anthony Cimino
+61 3 9804 5551



Jonathan Mallas
+61 3 9804 5551

<https://www.innerrealestate.com.au>



THIS FLOOR PLAN IS NOT TO SCALE. MEASUREMENTS ARE INDICATIVE AND IN METRES. VEGETATION IS PLACED FOR ILLUSTRATIVE PURPOSES ONLY.
THIS PLAN SHOULD NOT BE RELIED UPON. INTERESTED PARTIES SHOULD MAKE THEIR OWN ENQUIRIES.



THIS FLOOR PLAN IS NOT TO SCALE. MEASUREMENTS ARE INDICATIVE AND IN METRES. VEGETATION IS PLACED FOR ILLUSTRATIVE PURPOSES ONLY.
THIS PLAN SHOULD NOT BE RELIED UPON. INTERESTED PARTIES SHOULD MAKE THEIR OWN ENQUIRIES.