



1B/29 Queens Road Melbourne VIC

2 2 1

Access Via Queens Road

Exceptional dimensions and a sun-kissed courtyard unite to deliver a stunning indoor-outdoor existence in this luxury ground-floor townhouse within Melbourne's SKY Apartments. Welcome to a premium city oasis opposite Albert Park Golf Course, minutes to the CBD, and framed in a serene green garden. This is a sanctuary for space-seekers, entertainers and those with a focus on livability, where resort-style amenities are yours to enjoy and expansive parkland rests moments away, when leisure time calls.

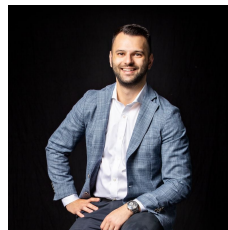
Highlights:

? 2-bedroom, 2-bathroom, 2-living room, 124 sqm townhouse

? Includes a secure car space large additional storage

Building Size : 124 sqm

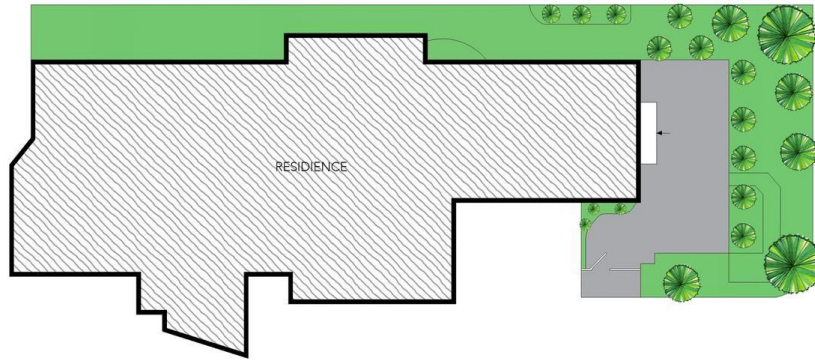
View : <https://www.innerrealestate.com.au/sale/vic/inner-city/melbourne/residential/apartment/6378983>



Anthony Cimino
+61 3 9804 5551



Jonathan Mallas
+61 3 9804 5551



THIS FLOOR PLAN IS NOT TO SCALE. MEASUREMENTS ARE INDICATIVE AND IN METRES. VEGETATION IS PLACED FOR ILLUSTRATIVE PURPOSES ONLY. THIS PLAN SHOULD NOT BE RELIED UPON. INTERESTED PARTIES SHOULD MAKE THEIR OWN ENQUIRIES.



THIS FLOOR PLAN IS NOT TO SCALE. MEASUREMENTS ARE INDICATIVE AND IN METRES. VEGETATION IS PLACED FOR ILLUSTRATIVE PURPOSES ONLY. THIS PLAN SHOULD NOT BE RELIED UPON. INTERESTED PARTIES SHOULD MAKE THEIR OWN ENQUIRIES.