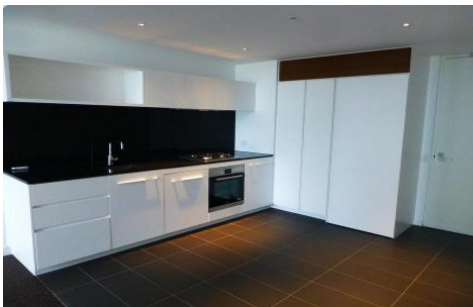




INNER REAL ESTATE NEXTRE



1119/39 Coventry Street Southbank VIC

2 **1** **1**

This 2 bedroom apartment has it all including built in wardrobes to both bedrooms, glistening central bathroom, European Laundry, kitchen with stone benches and top of the range Bosch appliances, and a large open plan living area with split system heating and cooling.

The apartment also comes complete with a secure car space and a storage cage.

Enjoy the facilities which The Guilfoyle has to offer including indoor pool, bbq area, and gymnasium. The Guilfoyle offers a premium position and enviable lifestyle so don't delay your inspection.

Type : Apartment

View : <https://www.innerrealestate.com.au/lease/vic/inner-city/southbank/residential/apartment/6380162>



Jordan Bracegirdle
0428 967 571



Kayani Shahzeb
+61 3 9804 5551