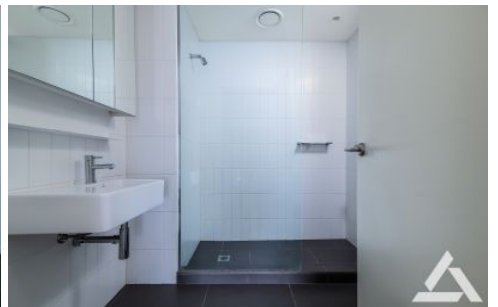




**INNER REAL ESTATE
NEXTRE**

Private Inspections Made Easy

- Book**
Click "Book an Inspection Time" to select a time. Alternatively click "Contact Agent" and you will be sent a link to the online booking system.
- Inspect**
Our friendly team of Sales and Leasing agents will take you on a private inspection of the property at a time that suits your schedule.
- Update**
By registering you confirm your place at the inspection. You will immediately be informed of any changes and updates to the property including price.

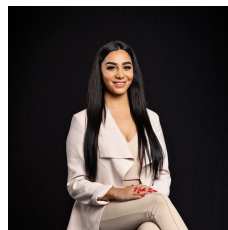


502/20 Burnley Street Richmond VIC

2 2 1

Stylish contemporary 2 bedroom, 2 bathroom apartment with built-in robes- main bedroom has direct access to private balcony and en-suite, conveniently located on Burnley Street opposite the Victoria Gardens Shopping Centre, Bridge Road shopping precinct and transport to the CBD, features include a sleek designer gourmet kitchen with quality European Miele appliances, built-in dishwasher, cook top and range hood, large open plan dining/lounge area leads onto the private sunny entertainer's alfresco balcony. Other features include intercom access; Secure basement parking, concealed European laundry, split system heating and cooling, gym.

View : <https://www.innerrealestate.com.au/lease/vic/inner-city/richmond/residential/apartment/6384821>



Maha Yehia
0448 019 444



Hayley Tran
+61 3 9804 5551