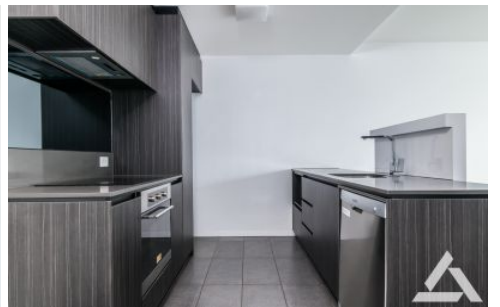




**INNER REAL ESTATE  
NEXTRE**

### Private Inspections Made Easy

- Book**  
Click "Book an Inspection Time" to select a time. Alternatively click "Contact Agent" and you will be sent a link to the online booking system.
- Inspect**  
Our friendly team of Sales and Leasing agents will take you on a private inspection of the property at a time that suits your schedule.
- Update**  
By registering you confirm your place at the inspection. You will immediately be informed of any changes and updates to the property including price.



**206/201 High Street Prahran VIC**

2 1 1

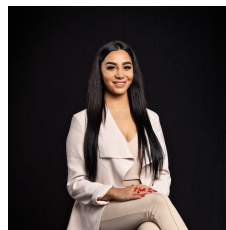
**\*\*ARRANGE AN INSPECTION TIME ONLINE - DETAILS BELOW\*\***

This sleek 2 bedroom apartment in one of Melbourne's most desired suburbs. Offers open plan living with split system air conditioning and heating, kitchen with quality appliances. Both bedroom with built in robes.

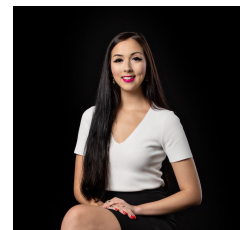
Residents will enjoy a private gym, 3 landscaped outdoor terrace areas, rooftop retreat with dining room, multi-media room, storage cage and the most stunning views over the city and the bay. The Jam Factory and Prahran Markets are only minutes away. Melbourne CBD is less than 5kms away and has easy access to all transport links including trains, trams, buses and bicycle paths.

Arranging an inspection is simple!

**View :** <https://www.innerrealestate.com.au/lease/vic/inner-city/prahran/residential/apartment/6385067>



**Maha Yehia**  
0448 019 444



**Sharlene Morling**  
0400 260 133