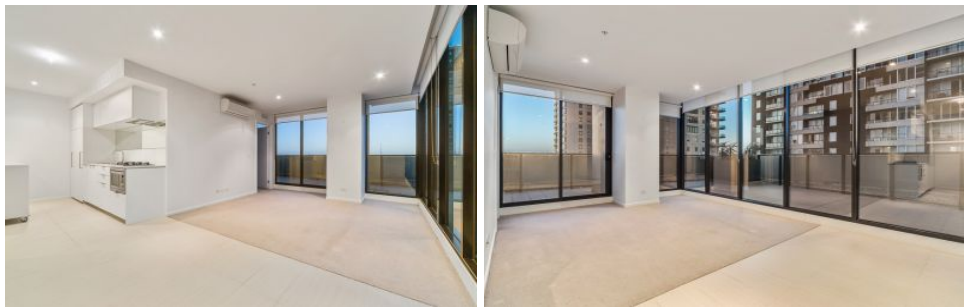




**INNER REAL ESTATE  
NEXTRE**

### Private Inspections Made Easy

- Book**  
Click "Book an Inspection Time" to select a time. Alternatively click "Contact Agent" and you will be sent a link to the online booking system.
- Inspect**  
Our friendly team of Sales and Leasing agents will take you on a private inspection of the property at a time that suits your schedule.
- Update**  
By registering you confirm your place at the inspection. You will immediately be informed of any changes and updates to the property including price.



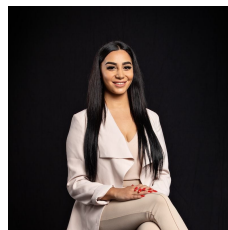
**606/50 Haig Street Southbank VIC**

2 1 1

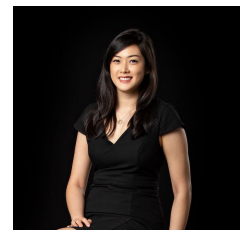
Located in the Tiara complex, this two-bedroom apartment has been designed for modern living in Southbank.

**View** : <https://www.innerrealestate.com.au/lease/vic/inner-city/southbank/residential/apartment/6393773>

- ? Secure building with own car park
- ? Secure Entry with daytime building manager. Apartment has intercom entry, secure lift access
- ? Open plan living with waterproof timber floorboards in the living, kitchen and dining area (newly placed in March 2021, new photos to be uploaded shortly. Currently photos are mainly showing the space)
- ? Huge private terrace that wraps around two sides of the apartment for great outdoor living
- ? Kitchen fitted with dishwasher, fridge, oven and has gas cooktop.
- ? Two bedrooms with built in robes and 1 bed frame included so you can bring your own mattress (pls refer to photos)



**Maha Yehia**  
0448 019 444



**Jane Wong**  
0418 511 885

