



303/565 Flinders Street Melbourne VIC

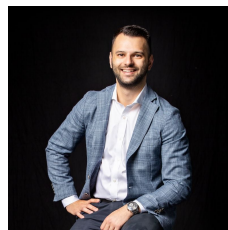
2 1 1

Enjoy sweeping city and Docklands views in the heart of the CBD with this prime corner apartment in the West Tower of Northbank Place. This is one of a limited collection of apartments offering a corner panorama in this premier location by the banks of the Yarra River. Work, play or invest in the epicentre of the urban action, with every city amenity imaginable at your fingertips.

View : <https://www.innerrealestate.com.au/sale/vic/inner-city/melbourne/residential/apartment/6421151>

Highlights:

- ? Spacious 2-bedroom apartment with a secure car park
- ? Corner position with an undercover balcony
- ? Panoramic city and Docklands views
- ? Stainless steel kitchen appliances and a breakfast island
- ? Exceptional natural light throughout
- ? Generous bedrooms with mirrored built-in robes
- ? Split system heating/cooling, video intercom
- ? Walking distance to trams, Southern Cross Station and



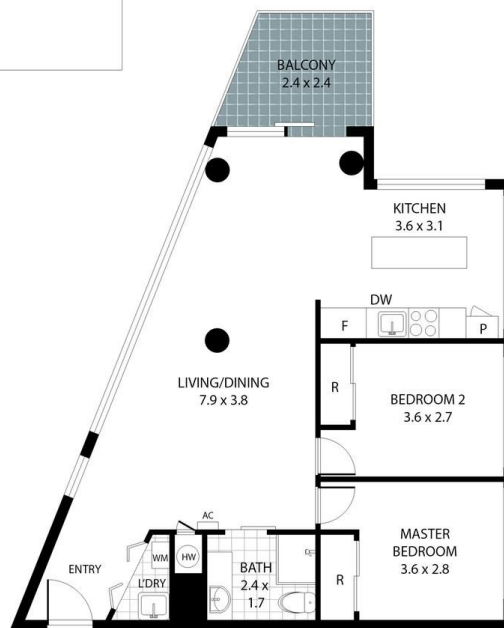
Anthony Cimino
+61 3 9804 5551



Jordan Bracegirdle
0428 967 571



THIS FLOOR PLAN IS NOT TO SCALE. MEASUREMENTS ARE INDICATIVE AND IN METRES. VEGETATION IS PLACED FOR ILLUSTRATIVE PURPOSES ONLY. THIS PLAN SHOULD NOT BE RELIED UPON. INTERESTED PARTIES SHOULD MAKE THEIR OWN ENQUIRIES.



THIS FLOOR PLAN IS NOT TO SCALE. MEASUREMENTS ARE INDICATIVE AND IN METRES. VEGETATION IS PLACED FOR ILLUSTRATIVE PURPOSES ONLY. THIS PLAN SHOULD NOT BE RELIED UPON. INTERESTED PARTIES SHOULD MAKE THEIR OWN ENQUIRIES.