



INNER REAL ESTATE

NEXTRE



3107/180 City Road Southbank VIC

1 1 1

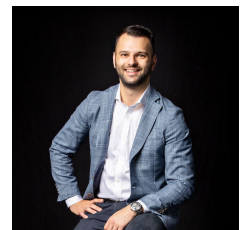
Featuring a soaring elevation in Southbank's sophisticated heart, this modern 1-bedroom apartment with Port Phillip Bay and Yarra River views presents premium city-edge living. Located within the award-winning SouthbankONE building, resort-style facilities pair with a vista stretching from the bay to the CBD - an ever-changing outlook over Melbourne's unique landscape. Gaze over the Crown Casino and Entertainment Complex to Crowne Plaza and South Wharf, backdropped by the West Gate Bridge and the Bolte Bridge in the distance. Nest or invest in a blue-chip location surrounded by the best of Melbourne.

- ? Free-flowing living and dining leading through to an undercover balcony
- ? Stone-topped kitchen with waterfall edged breakfast bar, stainless steel appliances and gas cooktop
- ? Fully tiled bathroom featuring shower-over-bath and

Price : \$ 435,000
Building Size : 52 sqm
View : <https://www.innerrealestate.com.au/sale/vic/inner-city/southbank/residential/apartment/6534876>

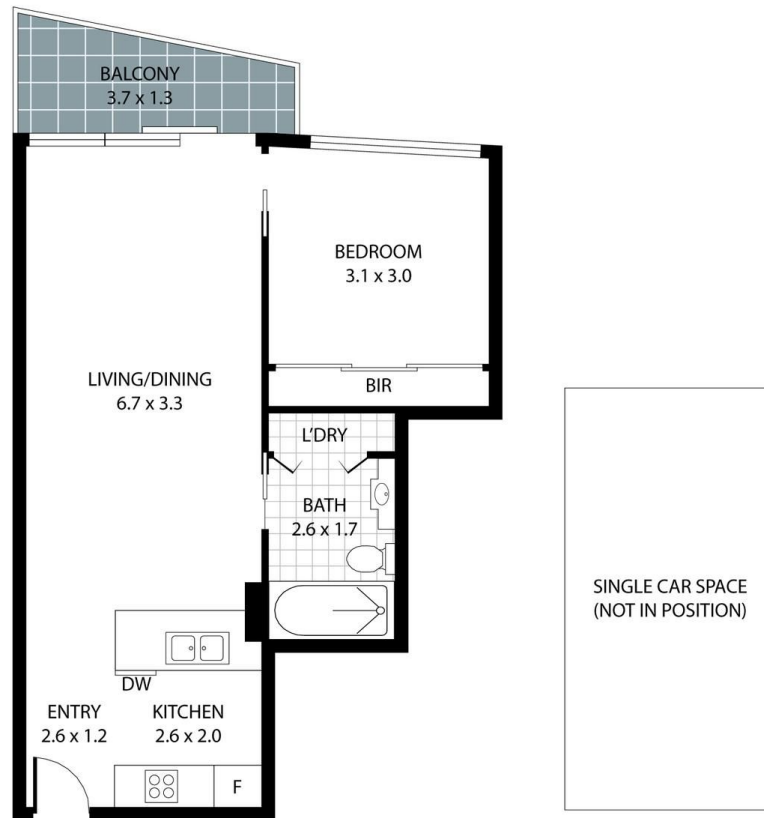


Jonathan Mallas
+61 3 9804 5551



Anthony Cimino
+61 3 9804 5551

<https://www.innerrealestate.com.au>



THIS FLOOR PLAN IS NOT TO SCALE. MEASUREMENTS ARE INDICATIVE AND IN METRES. VEGETATION IS PLACED FOR ILLUSTRATIVE PURPOSES ONLY.
THIS PLAN SHOULD NOT BE RELIED UPON. INTERESTED PARTIES SHOULD MAKE THEIR OWN ENQUIRIES.



THIS FLOOR PLAN IS NOT TO SCALE. MEASUREMENTS ARE INDICATIVE AND IN METRES. VEGETATION IS PLACED FOR ILLUSTRATIVE PURPOSES ONLY.
THIS PLAN SHOULD NOT BE RELIED UPON. INTERESTED PARTIES SHOULD MAKE THEIR OWN ENQUIRIES.