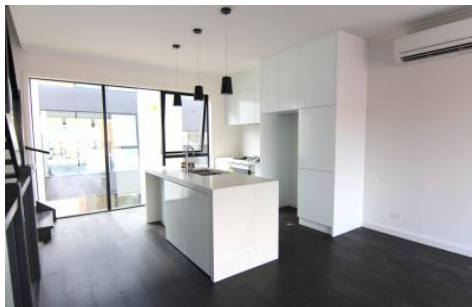
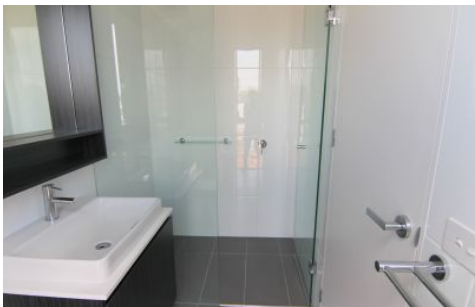




INNER REAL ESTATE NEXTRE



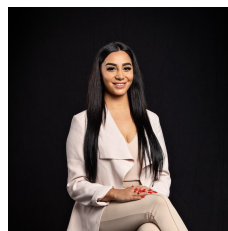
9 Quinn Road Port Melbourne VIC

3 3 1

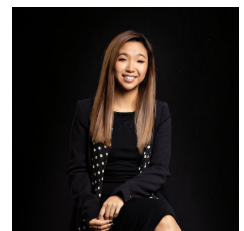
This beautiful 3 bedrooms features top quality fixtures & fittings throughout. Comprises- private entry to a single locked up garage Master bedroom with en-suite, first floor is an airy open plan large stone bench tops kitchen with stainless steel appliances and floorboards, spacious dining and living areas, second level features 2 double bedrooms both with BIR's one with en-suite, large central bathroom with bathtub and study area.

Additional features include heating/cooling throughout with lots of natural light. Just a short distance to Southbank CBD, supermarket, restaurants, schools and shops, Port Melbourne beach and freeway.

View : <https://www.innerrealestate.com.au/lease/vic/inner-city/port-melbourne/residential/townhouse/6551010>



Maha Yehia
0448 019 444



Hayley Tran
+61 3 9804 5551