

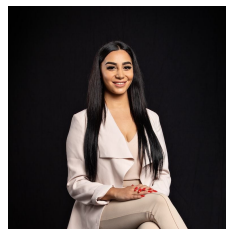
### 1403/135 A'beckett Street Melbourne VIC

1 1

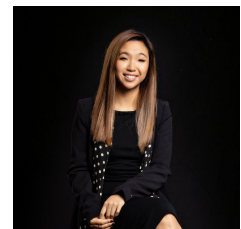
Sophisticated and supremely central, this Level 14 apartment in the designer EQ Tower brings vibrant Melbourne CBD living to the fore.

**View :** <https://www.innerrealestate.com.au/lease/vic/inner-city/melbourne/residential/apartment/6551011>

This luxury fully furnished 1-bedroom domain features a study and a dazzling city view. Open-plan living and dining share space with a luxe bathroom showcasing herringbone tiling and a walk-in shower, and a sleek stone-topped kitchen dressed in stainless steel appliances - including a gas cooktop.



**Maha Yehia**  
0448 019 444



**Hayley Tran**  
+61 3 9804 5551

Other highlights include split system air-conditioning, a concealed Euro laundry and mirrored robes in the bedroom.

It rests within a striking building offering exceptional amenities including a 25m outdoor pool and an outdoor