

2103/109 Clarendon Street Southbank VIC

2 **1** **1**

Prepare to say WOW!... The amazing view from the 21st floor of this apartment will leave you breathless. Conveniently located in the middle of all entertainment complexes, with Crown Casino, South Melbourne market, DFO, restaurants and the CBD just minutes away.

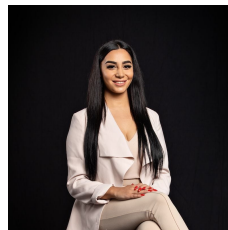
The property itself, boasts a modern design with open plan living/dining with kitchen featuring stainless steel, split system heating/cooling, gas cook top and a dishwasher. Residences can enjoy all the amenities in the building including a fully-equipped gym, spa and entertainment room. For those who need to catch up on work, business centre and meeting rooms are available for use.

Where else will you find a two bedroom apartment with a car space, in the heart of the best of what Southbank and South Melbourne have to offer!

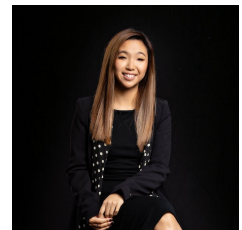
Building Size : 57 sqm

View

: <https://www.innerrealestate.com.au/lease/vic/inner-city/southbank/residential/apartment/6555302>



Maha Yehia
0448 019 444



Hayley Tran
+61 3 9804 5551

