

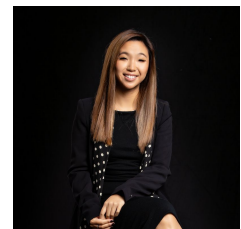


2216/350 William Street Melbourne VIC

1

Enjoy the privacy of this one bedroom apartment at Melbourne's most exciting new development at 350 William Street that places you right in the heart of the CBD. The great features of this property include: contemporary modern living & kitchen, west-facing balcony with stunning views of the bay and Flagstaff Garden, stainless steel gas cook top, oven, dishwasher, mirrored BIR, internal laundry and split system heating & cooling in bedroom and living. It is only a short stroll from Queen Victoria Market, Melbourne University & RMIT with train & tram stops on your doorstep. Building facilities include a full state of the art gymnasium, Hertz on Demand rental car scheme, NBN-ready apartments (National Broadband Network) and provision for future ground floor food and retail outlets. Why wait any longer, it's time to make your move!

View : <https://www.innerrealestate.com.au/lease/vic/inner-city/melbourne/residential/studio/6567469>



Hayley Tran
+61 3 9804 5551