

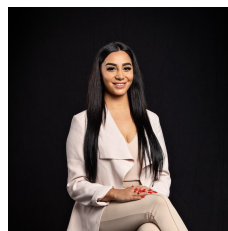
805/338 Kings Way South Melbourne VIC

2 1 1

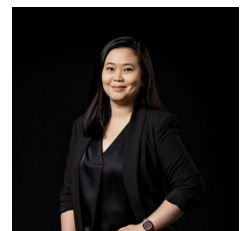
Enjoy a premier inner city address, footsteps from Albert Park Lake, this stylish two-bedroom apartment is quietly positioned on level eight of 'Silverleaf', one of South Melbourne's finest modern developments. Complemented by premium security plus off street parking, and located just a short stroll to the Royal Botanic Gardens, Fawkner Park, Clarendon Street cafes and South Melbourne Market.

View : <https://www.innerrealestate.com.au/lease/vic/inner-city/south-melbourne/residential/apartment/6575736>

- ? Sizeable living area flooded in light through full height windows
- ? Open plan kitchen with ample storage spaces
- ? Spacious bedrooms with mirrored built-in robes
- ? Sleek bathroom with oversized shower
- ? Secure car space, immaculate building with lift access



Maha Yehia
0448 019 444



Maya Angela
+61 3 9804 5551