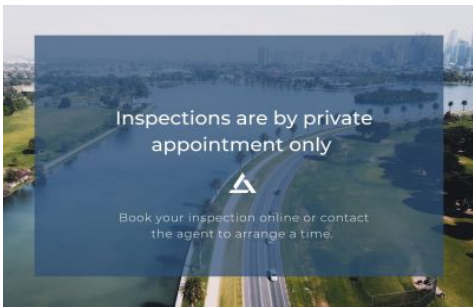




# INNER REAL ESTATE NEXTRE



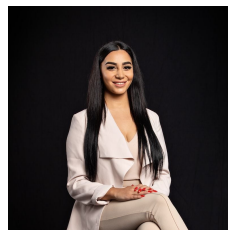
## 6/10 Larbert Road Noble Park VIC

1 1 1

This tidy 1 bedroom flat is perfect for the single person or couple just starting out! It includes open kitchen/lounge area, quality floors throughout, built in robes and electric appliances.

Prime location within a stone throw to Noble Park shopping, public transport, walking distance to schools, Noble Park station and all other amenities. Easy access to EastLink and Princes Highway, only 26km from the city of Melbourne.

**View :** <https://www.innerrealestate.com.au/lease/vic/south-east/noble-park/residential/apartment/6583911>



**Maha Yehia**  
0448 019 444



**Sandra Cimino**  
0398045551