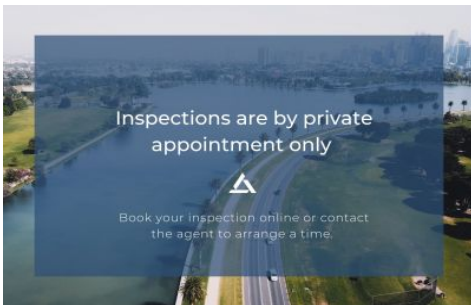




INNER REAL ESTATE

NEXTRE



110/525 Rathdowne Street Carlton VIC

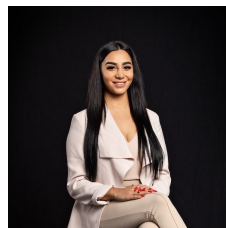
2 1 1

This 2 bedroom apartment is sure to please both in location and quality. Offering modern low maintenance living. Enjoy all Carlton has to offer with dining options, transport and parks all located with walking distance.

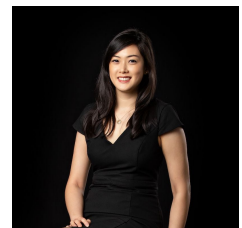
View : <https://www.innerrealestate.com.au/lease/vic/inner-city/carlton/residential/apartment/6583949>

This light filled two bedroom apartment features:

- Open plan kitchen/living area
- Quality timber flooring
- Two good sized bedrooms with window and built in robes
- Split system heating and cooling
- Functional kitchen offering stone bench tops, dishwasher and gas cook top
- Well appointed central bathroom and European laundry
- A private balcony
- A secure basement car space
- Security entrance



Maha Yehia
0448 019 444



Jane Wong
0418 511 885