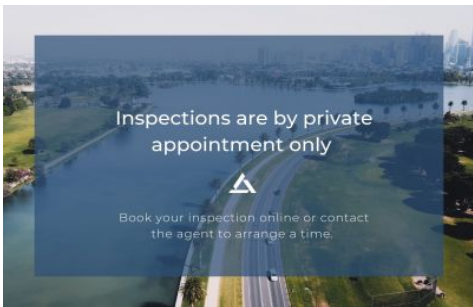




Actual View



911/35 Albert Road Melbourne VIC

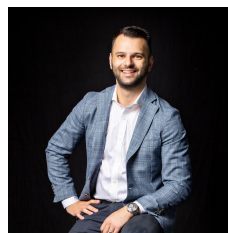
2 1 1

A sweeping view taking in Albert Park Lake and Port Phillip Bay is the centrepiece of this stunning 2 bedroom apartment high up in the striking Emerald Building. This is cosmopolitan living at its best in one of Melbourne's most desirable locations. The city skyline is your backdrop, St Kilda Road tram stops are paces away and you are spoilt for choice with the arts precinct, South Melbourne Market and the iconic Melbourne Sports and Aquatic Centre all within a 1.5km radius. This contemporary apartment is light and bright - spilling out onto a full-length balcony capturing water views. Live the high life with best of Melbourne at your fingertips and the beach within easy reach.

- ? 2 spacious bedrooms with built-in-robos
- ? Dual-access semi-ensuite bathroom and separate powder room
- ? Split system heating and cooling

**Price** : \$ 580,000

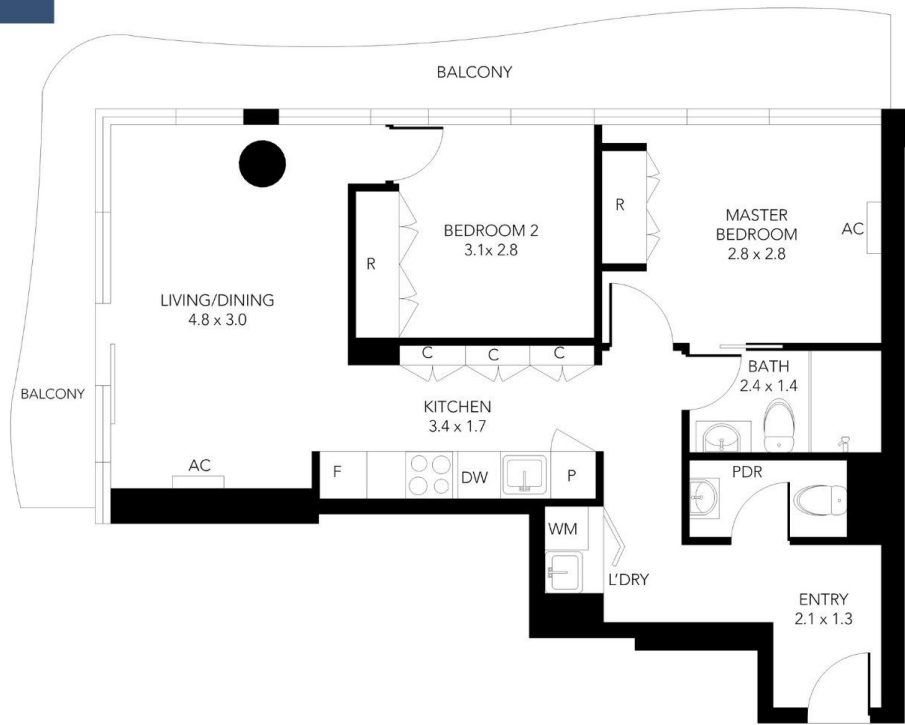
**View** : <https://www.innerrealestate.com.au/sale/vic/inner-city/melbourne/residential/apartment/6591898>



**Anthony Cimino**  
+61 3 9804 5551



**Jordan Bracegirdle**  
+61 3 9804 5551



THIS FLOOR PLAN IS NOT TO SCALE. MEASUREMENTS ARE INDICATIVE AND IN METRES. VEGETATION IS PLACED FOR ILLUSTRATIVE PURPOSES ONLY. THIS PLAN SHOULD NOT BE RELIED UPON. INTERESTED PARTIES SHOULD MAKE THEIR OWN ENQUIRIES.