

1607/8 Pearl River Road Docklands VIC

1 1

Located on the 16th level, this superb ONE BEDROOM apartment encompasses a stylishly contemporary interior, floor-to-ceiling windows and north facing balcony allowing for great natural light and spectacular views over the Yarra and Bolte Bridge.

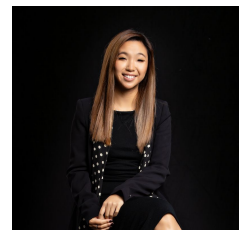
This amazing opportunity to reside at the Mariner Tower Complex with access to a great range of eating and recreational options. Enjoy free trams to the city, bike-share stations and easy freeway access. Walk to local shopping precinct, jump on the local free tram to get to the city, or walk everywhere, this is a great location for Inner City Living.

Additional features include:

- Quality Miele appliances,
- Open plan living and dining area,

Price : \$320 per week

View : <https://www.innerrealestate.com.au/lease/vic/inner-city/docklands/residential/apartment/6611814>



Hayley Tran
+61 3 9804 5551