



INNER REAL ESTATE NEXTRE



1017/555 St Kilda Road Melbourne VIC

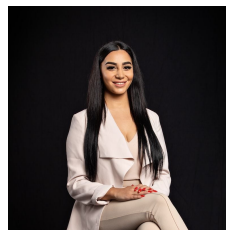
2 2 1

This stunning south-east facing apartment features an open plan living and dining which is overlooked by a kitchen equipped with top Miele appliances. Floor-to-ceiling windows invite the outdoors in to the spacious open plan living space, with dual views heightening the sense of luxury.

Featuring:

- Generous floorplan approx. 104 sqm and a spacious balcony of 22 sqm approx further expands the living areas
- Secure parking space with extra storage
- Both bedrooms with built-in robes; master with ensuite
- Sweeping 180 degree views offer picturesque views of the bay, and allow abundant sunlight to flow in all day long.
- Additional features include discrete laundry facilities, heating and cooling, intercom access and a secure car park

View : <https://www.innerrealestate.com.au/lease/vic/inner-city/melbourne/residential/apartment/6662288>



Maha Yehia
0448 019 444



Kayani Shahzeb
+61 3 9804 5551



TYPE D13

0807, 0907, 1007, 1107, 1207, 1307, 1407, 1507

Internal audit	0.200 ^a
----------------	--------------------

Hakrosy urta	22,5m ²
--------------	--------------------

Total area	104 km ²
------------	---------------------



FENDER KATALDIN ARCHITECTS

This plan and any associated way by subject to the terms of the contract and the subject to amendments and discontinual changes to such final working drawings, grid layout and authority requirement. The use of operations has been restricted to the boundaries of the flow and where a boundary is not shown, a wall or glass line and include any other. All dimensions are approximate.