

**1011/35 Malcolm Street South Yarra VIC**

2 1 1

Showcasing amenity, outlook and a truly magnificent location, this sensational 2BR designer apartment provides proof positive that a luxury lifestyle. Imagine living in the midst of trendy Chapel St shops and cafes while indulgent residents' facilities including a 25m indoor lap pool, spa, sauna, steam room, roof garden, tennis court, putting green, BBQ and sun-deck.

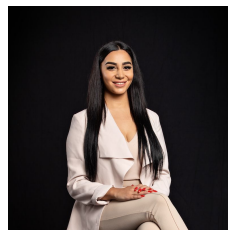
Open plan living extends to a broad balcony, while the streamlined stone kitchen boasts s/steel European appliances and mirror splash back. Includes BIRs to two double bedrooms, and a handy European laundry and cooling/heating system.

Utilities:

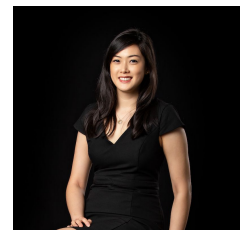
Electricity: WIN Energy (embedded)

Gas: Stove by Owners Corporation

**View** : <https://www.innerrealestate.com.au/lease/vic/inner-city/south-yarra/residential/apartment/6675100>



**Maha Yehia**  
+61 3 9804 5551



**Jane Wong**  
+61 3 9804 5551



ALL INFORMATION CONTAINED HERE IN IS GATHERED FROM SOURCES WE BELIEVE TO BE RELIABLE. HOWEVER WE CANNOT GUARANTEE ITS ACCURACY AND INTERESTED PERSONS SHOULD RELY ON THEIR OWN ENQUIRES. DIMENSIONS ARE APPROXIMATE.