

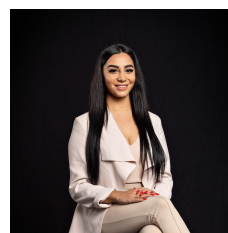
**301/338 Kings Way South Melbourne VIC**

2 1 1

Enjoy a premier inner city address, footsteps from Albert Park Lake, this stylish two-bedroom apartment is quietly positioned on level eight of 'Silverleaf', one of South Melbourne's finest modern developments. Complemented by premium security plus off street parking, and located just a short stroll to the Royal Botanic Gardens, Fawkner Park, Clarendon Street cafes and South Melbourne Market.

**View :** <https://www.innerrealestate.com.au/lease/vic/inner-city/south-melbourne/residential/apartment/6685312>

- ? Sizeable living area flooded in light through full height windows
- ? Open plan kitchen with ample storage spaces and integrated fridge
- ? Spacious bedrooms with mirrored built-in robes
- ? Sleek bathroom with oversized shower
- ? European laundry with washing machine & dryer
- ? Secure car space & storage cage

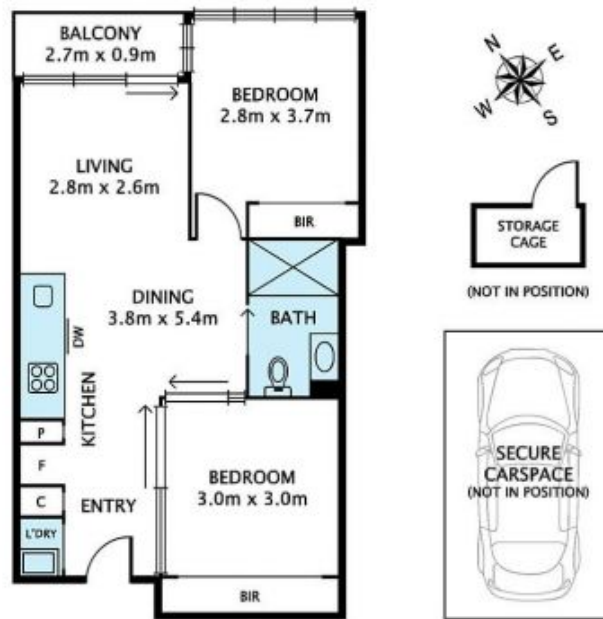


**Maha Yehia**  
0448 019 444



**Maya Angela**  
+61 3 9804 5551

## 301/338 KINGS WAY, SOUTH MELBOURNE



Disclaimer: Please note plans are indicative only and not drawn to exact scale. All dimensions are approximate. Potential buyers should satisfy themselves of pertinent matters.