



INNER REAL ESTATE NEXTRE



107/51 Garden Street South Yarra VIC

1 1

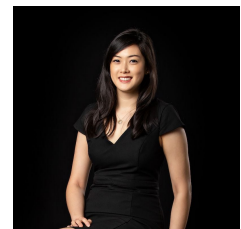
Located within walking distance to vibrant Chapel Street restaurants, cafes, retail stores and all public transports & amenities. This neat fully furnished studio includes a single bed, study desk, gas stove top & refrigerator and ample storage space.

Valid student card to be provided with application.

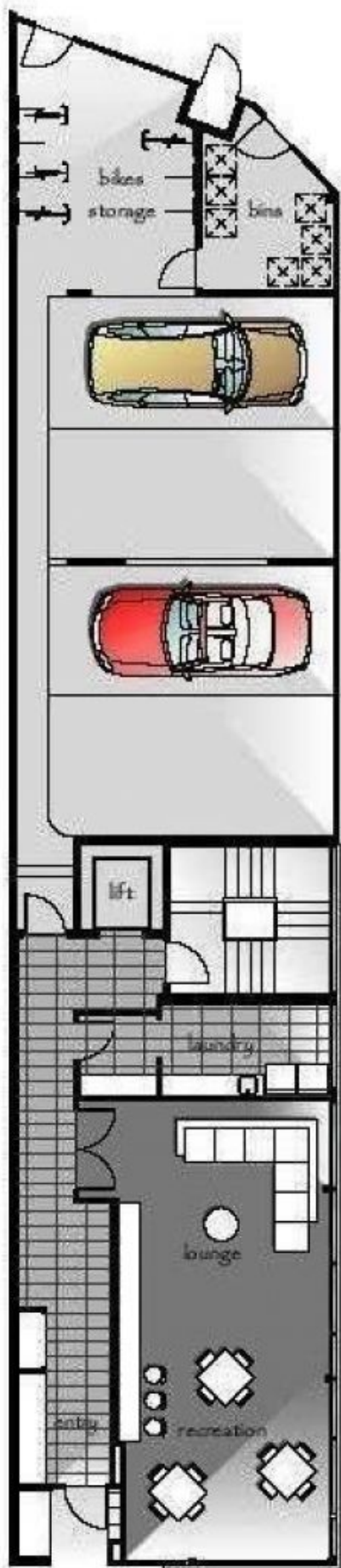
View : <https://www.innerrealestate.com.au/lease/vic/inner-city/south-yarra/residential/apartment/6798476>



Maya Angela
+61 3 9804 5551



Jane Wong
0418 511 885



Palfreyman Street

Garden Street

GROUND FLOOR



Palfreyman Street

Garden Street

FIRST LEVEL