



## 3316/2 Connam Avenue Clayton VIC

2 2 1

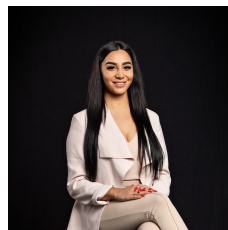
This two-bedroom apartment styled with contemporary fittings and finishes that will sure to impress. The property is filled with an abundance of natural light with flow to ceiling windows. Open plan living and dining area which flows to the balcony, the kitchen features a marble benchtop, mirror splashback and stainless-steel appliance along with plenty storage space. Two generous sized bedrooms with built in robes and carpet in each room and leading to their own en-suite.

Residence will also have access to amenities including:

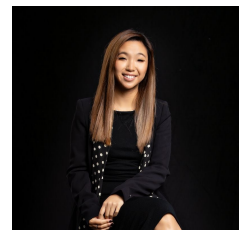
- Swimming pool
- Tennis court
- BBQ rooftop
- Family friendly playground

You are moments away from Clayton Station and shops,

**View :** <https://www.innerrealestate.com.au/lease/vic/east/clayton/residential/apartment/6826624>



**Maha Yehia**  
0448 019 444



**Hayley Tran**  
+61 3 9804 5551