

## 18 Wilson Mews North Melbourne VIC

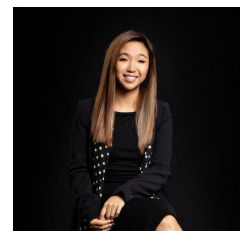
2 2 1

This quietly situated two-bedroom, offers an irresistible lifestyle opportunity. Walking distances to a Woolworths & IGA, post office, cafés, Royal Park, university along with The Royal Children's & Melbourne hospital.

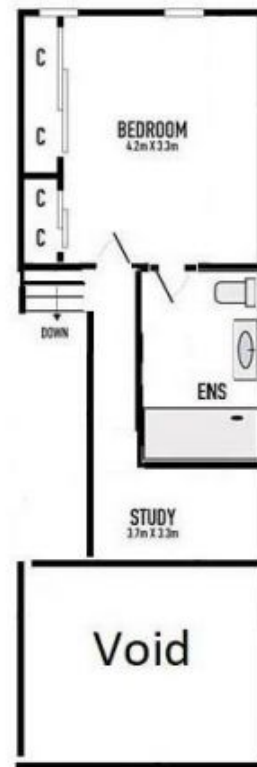
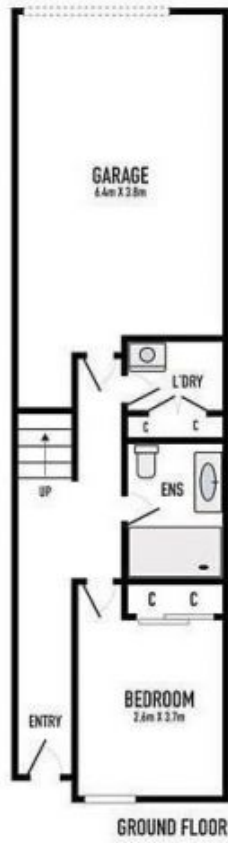
**View :** <https://www.innerrealestate.com.au/lease/vic/inner-city/north-melbourne/residential/apartment/7154873>

Maximising space and light, the home features bright open plan living, with the dining area spilling onto a generous decked balcony. A modern kitchen with stainless appliances, white goods and a windowed splashback. This light filled generous sized bedrooms and modern bathrooms are separated across the ground & top floor, along with two designated study area.

Features a laundry room with storage space, split-system air conditioning in each bedroom and automated garage.



**Hayley Tran**  
**+61 3 9804 5551**



\* DIMENSIONS ARE APPROXIMATE AND FOR ILLUSTRATIVE PURPOSES ONLY

