



1415/677 La Trobe Street Docklands VIC

1 1

A marvel of chic contemporary design, low-maintenance luxury and iconic Docklands living, this stunning, light-filled apartment in the stylish M Docklands apartment complex offers a sleek interior and resort-style amenities to match its incredible address, just footsteps from Marvel Stadium.

Price : \$370,000
Building Size : 52 sqm
View : <https://www.innerrealestate.com.au/sale/vic/inner-city/docklands/residential/apartment/7599319>

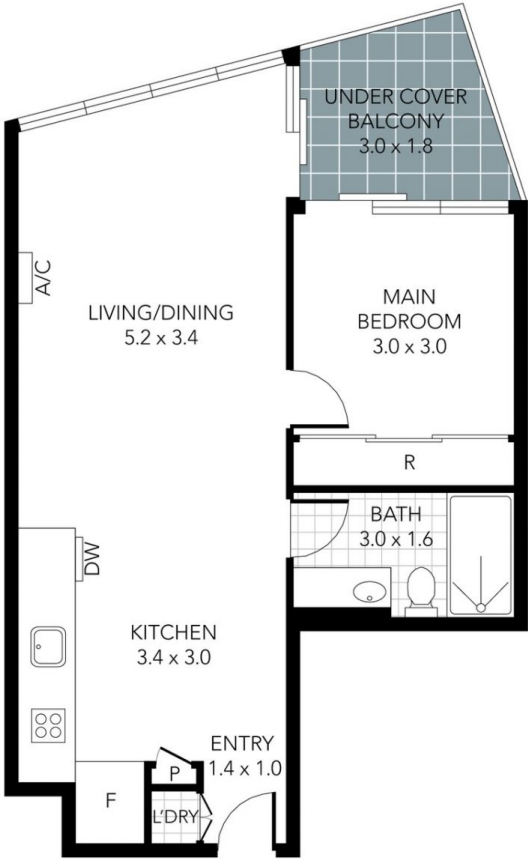
- ? Designed by award-winning architects Elenberg Fraser
- ? Living and dining domain, illuminated by a wall of glass
- ? Sleek kitchen with waterfall stone benchtops
- ? Stainless steel appliances, including dishwasher
- ? Balcony with dual access to both the living zone and bedroom
- ? Bedroom benefitting from carpeting and mirrored built-in-robos
- ? Scandinavian styled bathroom featuring trendy timber finishes
- ? Euro laundry, split system heating/air con and intercom



Jonathan Mallas
+61 3 9804 5551



Anthony Cimino
+61 3 9804 5551



THIS PLAN IS NOT TO SCALE. MEASUREMENTS ARE INDICATIVE AND IN METRES. SITE PLAN REFLECTS APPROXIMATE POSITION OF BUILDINGS ON PROPERTY ONLY AND IS NOT AN ACCURATE REPRESENTATION OF VEGETATION AND OTHER EXTERNAL LANDSCAPE FEATURES. THIS PLAN SHOULD NOT BE RELIED UPON AND INTERESTED PARTIES SHOULD MAKE THEIR OWN ENQUIRIES.