



# INNER REAL ESTATE

## NEXTRE



**2103/109 Clarendon Street Southbank VIC**

**2** **1** **1**

#### Outgoings

Owners Corporation \$4,748 pa

Council Rates \$971 pa

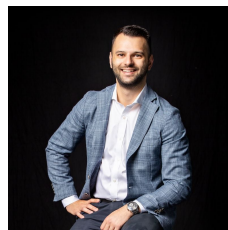
Water Rates \$650 pa

**Price** : \$ 410,000

**Building Size** : 57 sqm

**View** : <https://www.innerrealestate.com.au/sale/vic/inner-city/southbank/residential/apartment/7646276>

Immerse yourself in Southbank style and blue-water bay views with the offering of this sophisticated 21st floor apartment, situated in the highly sought-after 109 Clarendon building. Ensuring an exceptional lifestyle, the apartment boasts superior resort-inspired building facilities, including a fully equipped gymnasium, entertainment and meeting rooms plus a business centre. While a short stroll outside will connect you with Melbourne's premier attractions, including a seemingly endless selection of restaurants and bars, Clarendon Street shops, South Melbourne Market, South Wharf Promenade, Crown Entertainment Complex, Southern Cross Station and city

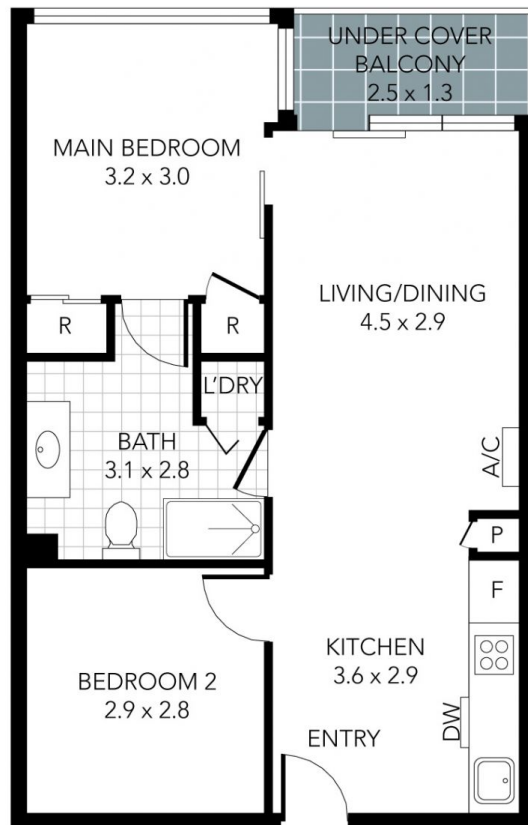


**Anthony Cimino**  
**+61 3 9804 5551**



**Jonathan Mallas**  
**+61 3 9804 5551**

<https://www.innerrealestate.com.au>



THIS PLAN IS NOT TO SCALE. MEASUREMENTS ARE INDICATIVE AND IN METRES. SITE PLAN REFLECTS APPROXIMATE POSITION OF BUILDINGS ON PROPERTY ONLY AND IS NOT AN ACCURATE REPRESENTATION OF VEGETATION AND OTHER EXTERNAL LANDSCAPE FEATURES. THIS PLAN SHOULD NOT BE RELIED UPON AND INTERESTED PARTIES SHOULD MAKE THEIR OWN ENQUIRIES.

floorpik by scandipik