

135/416 St Kilda Road Melbourne VIC

1 1 1

Positioned above one of Melbourne's finest boulevards and surrounded by a swathe of green open spaces, this City Condos apartment offers city living to adore.

Glide onto trams below, stroll around Albert Park Lake and run The Tan with ease, all mere metres away.

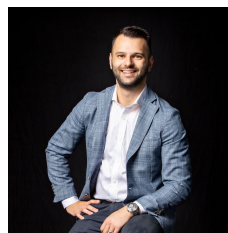
This modern 1-bedroom domain features a secure basement car park, open-plan living with air-conditioning and a covered balcony for unwinding in the fresh air.

The accommodation comprises a window-walled bedroom with a built-in robe, and an adjacent bathroom/laundry.

Stainless steel appliances, including a gas cooktop, adorn a neat kitchen.

Price : \$379,000

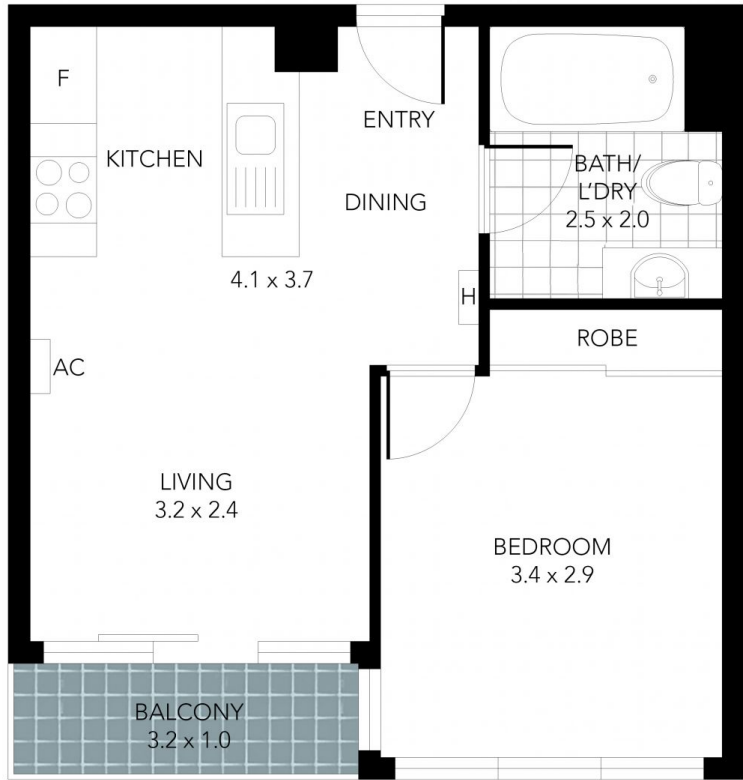
View : <https://www.innerrealestate.com.au/sale/vic/inner-city/melbourne/residential/apartment/7688966>



Anthony Cimino
+61 3 9804 5551



Jonathan Mallas
+61 3 9804 5551



THIS FLOOR PLAN IS NOT TO SCALE. MEASUREMENTS ARE INDICATIVE AND IN METRES. VEGETATION IS PLACED FOR ILLUSTRATIVE PURPOSES ONLY.
THIS PLAN SHOULD NOT BE RELIED UPON. INTERESTED PARTIES SHOULD MAKE THEIR OWN ENQUIRIES.