



1/18 Queens Road Melbourne VIC

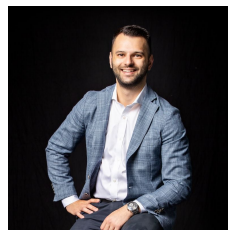
2 1 1

Access via Queens Lane

Laced with heritage features, this gorgeous 'Lancaster House' apartment enjoys all the romance of its art deco past whilst capturing modern-day appeal from its exquisite garden setting. The period character of this light-filled apartment shines throughout, with a variety of distinct living zones relishing the appeal of soaring high ceilings and sash windows, whilst embracing the contemporary luxuries of stone benchtops and stainless-steel appliances. An allocated lock-up garage adds a significant advantage to a great city edge setting, opposite Albert Park Lake.

- ? Central entrance foyer, ideal for greeting guests
- ? Two well-scaled bedrooms, both featuring robes
- ? Family bathroom detailed with art deco accents, separate toilet

View : <https://www.innerrealestate.com.au/sale/vic/inner-city/melbourne/residential/apartment/7730037>



Anthony Cimino
+61 3 9804 5551



Jonathan Mallas
+61 3 9804 5551

1 CAR SPACE



THIS PLAN IS NOT TO SCALE. MEASUREMENTS ARE INDICATIVE AND IN METRES. SITE PLAN REFLECTS APPROXIMATE POSITION OF BUILDINGS ON PROPERTY ONLY AND IS NOT AN ACCURATE REPRESENTATION OF VEGETATION AND OTHER EXTERNAL LANDSCAPE FEATURES. THIS PLAN SHOULD NOT BE RELIED UPON AND INTERESTED PARTIES SHOULD MAKE THEIR OWN ENQUIRIES.