



506/32 Bray Street South Yarra VIC

1 1

Taking affordable living to the next level, this stunning studio apartment offers the ultimate inner-urban lifestyle for university students, professionals and savvy investors, only a short stroll to Chapel Street's finest shops, restaurants and bars, the Jam Factory, The Como, Prahran Market, parkland, trams and South Yarra Train Station.

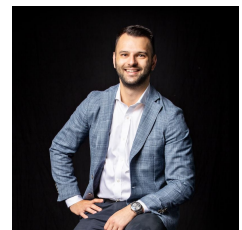
Price : \$ 212,000

View : <https://www.innerrealestate.com.au/sale/vic/inner-city/south-yarra/residential/apartment/7791479>

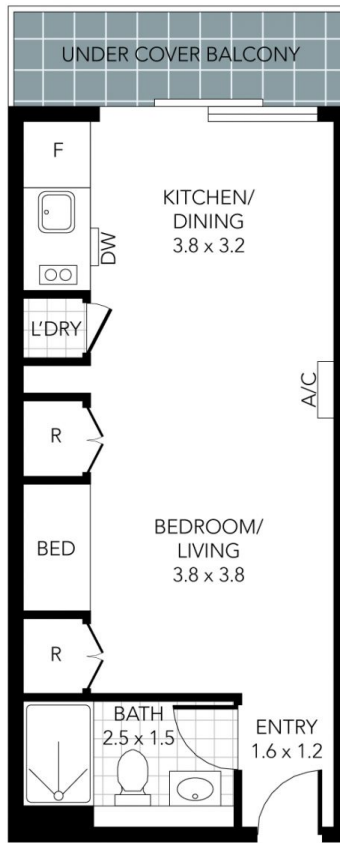
- ? Stylish 5th floor studio apartment
- ? Bedroom area with purpose-built curtain room divider
- ? Open living and dining zone
- ? Sleek stone-finished kitchen with glass splashback
- ? Equipped with stainless steel appliances
- ? Sparkling bathroom with toilet
- ? Under cover balcony
- ? Concealed European laundry
- ? Secure intercom entry, lift access
- ? On the doorstep of Chapel St shops, bars & restaurants



Jonathan Mallas
+61 3 9804 5551



Anthony Cimino
+61 3 9804 5551



THIS PLAN IS NOT TO SCALE. MEASUREMENTS ARE INDICATIVE AND IN METRES. SITE PLAN REFLECTS APPROXIMATE POSITION OF BUILDINGS ON PROPERTY ONLY AND IS NOT AN ACCURATE REPRESENTATION OF VEGETATION AND OTHER EXTERNAL LANDSCAPE FEATURES. THIS PLAN SHOULD NOT BE RELIED UPON AND INTERESTED PARTIES SHOULD MAKE THEIR OWN ENQUIRIES.