



**INNER REAL ESTATE  
NEXTRE**

### Private Inspections Made Easy

- Book**  
Click "Book an Inspection Time" to select a time. Alternatively click "Contact Agent" and you will be sent a link to the online booking system.
- Inspect**  
Our friendly team of Sales and Leasing agents will take you on a private inspection of the property at a time that suits your schedule.
- Update**  
By registering you confirm your place at the inspection. You will immediately be informed of any changes and updates to the property including price.



## 2/10 Kelvin Grove Springvale VIC

1 1 1

This 1 bedroom ground floor flat is located in the heart of Springvale and only a few minutes walk to the Springvale shops and station. It is tucked away from the busy Springvale Road and in the quiet and secure block of apartments.

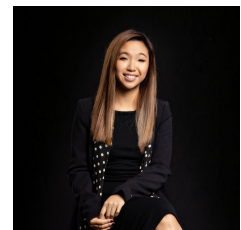
**View :** <https://www.innerrealestate.com.au/lease/vic/south-east/springvale/residential/unit/7799432>

The flat comprises of:

- Separate lounge with electric panel heater and access to the balcony
- Spacious kitchen with gas cooking and enough room for a dining table
- Bedroom with built in wardrobes and wall to wall carpet
- Bathroom with separate toilet
- Cupboard in the passage for extra storage
- Laundry taps inside the bathroom
- Car space for one car



**Tim Bush**  
+61 3 9804 5551



**Hayley Tran**  
+61 3 9804 5551