



107/38 Nott Street Port Melbourne VIC

1 1 1

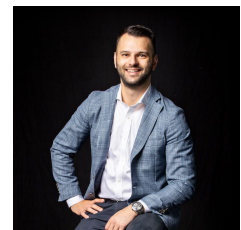
Within meandering distance of the golden shores of Port Melbourne Beach for a sunset stroll, this sensational city-edge apartment presents the perfect opportunity for a young professional, downsizer or investor seeking beachside convenience. Floor-to-ceiling windows draw in an abundance of light, permeating the open plan living, dining and kitchen with a warming glow, while sliding doors opening out onto the balcony allow sea breeze to flow throughout.

- ? Stunning 1-bedroom apartment in the boutique 'Luur' complex
- ? Master bedroom with mirrored built-in-robe
- ? Central bathroom with toilet and shower
- ? Sleek kitchen showcasing stone benchtops and glass splashbacks
- ? Stainless steel cooking appliances plus semi-integrated

Price : \$480,000 - \$500,000
Building Size : 46 sqm
View : <https://www.innerrealestate.com.au/sale/vic/inner-city/port-melbourne/residential/apartment/7805063>



Jonathan Mallas
+61 3 9804 5551



Anthony Cimino
+61 3 9804 5551



THIS PLAN IS NOT TO SCALE. MEASUREMENTS ARE INDICATIVE AND IN METRES. SITE PLAN REFLECTS APPROXIMATE POSITION OF BUILDINGS ON PROPERTY ONLY AND IS NOT AN ACCURATE REPRESENTATION OF VEGETATION AND OTHER EXTERNAL LANDSCAPE FEATURES. THIS PLAN SHOULD NOT BE RELIED UPON AND INTERESTED PARTIES SHOULD MAKE THEIR OWN ENQUIRIES.