

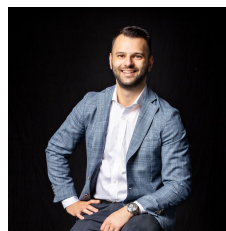
**52/24-38 Little Bourke Street Melbourne VIC**

**2** **1**

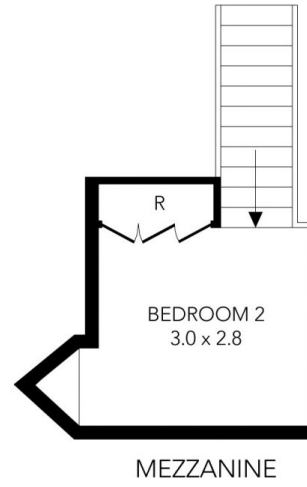
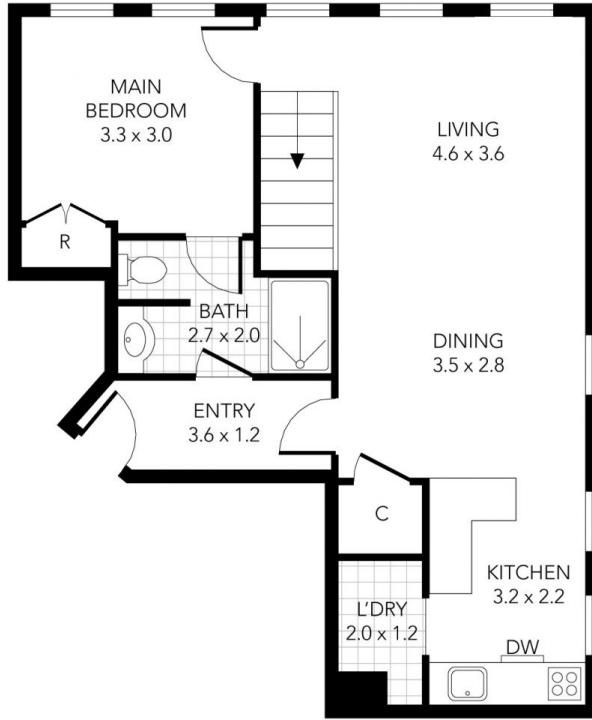
Kick back and relax in this charming heritage apartment (circa 1884), where a stunning neo gothic style façade is matched with modern appointments and poolside entertaining. Designed by William Pitt, the apartment enjoys a rich history alongside some of Melbourne's most iconic buildings, such as the Princess Theatre, while it's coveted Paris End address delivers enviable convenience to an array of exciting Melbourne amenities, including restaurants, theatres and boutique shops.

- ? Bedroom boasting built-in robes
- ? Ensuite-style access from the bedroom into the bathroom with toilet
- ? Stone-finished kitchen featuring glass splashbacks
- ? Stainless steel appliances including a dishwasher
- ? Spacious open plan living and dining room
- ? Stunning vaulted ceilings throughout

**Building Size** : 76 sqm  
**View** : <https://www.innerrealestate.com.au/sale/vic/inner-city/melbourne/residential/apartment/7807122>



**Anthony Cimino**  
**+61 3 9804 5551**



GROUND FLOOR

THIS PLAN IS NOT TO SCALE. MEASUREMENTS ARE INDICATIVE AND IN METRES. SITE PLAN REFLECTS APPROXIMATE POSITION OF BUILDINGS ON PROPERTY ONLY AND IS NOT AN ACCURATE REPRESENTATION OF VEGETATION AND OTHER EXTERNAL LANDSCAPE FEATURES. THIS PLAN SHOULD NOT BE RELIED UPON AND INTERESTED PARTIES SHOULD MAKE THEIR OWN ENQUIRIES.