



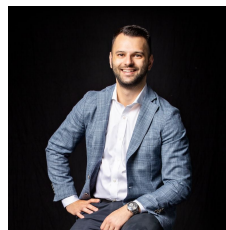
1001/338 Kings Way South Melbourne VIC

2 1 2

A flawless mix of modern style and lifestyle prestige, this spacious apartment sits only steps from Albert Park Lake and offers a light-filled environment that balances indoor and outdoor enjoyment whilst capturing CBD views. Designed with a café style bar ledge, the balcony is certain to inspire evenings outside whilst you soak up the views, while the interior is streamlined and offers plenty of space for living and dining alongside a quality equipped kitchen. Vibrantly situated mere meters from Albert Park Lake and close to South Melbourne Market, Melbourne's arts precinct and transport options.

- ? Two robed bedrooms
- ? Stylish bathroom with separate powder room
- ? Incredibly spacious living and dining zone adorned with floorboards
- ? Premium equipped kitchen boasting stone benchtops

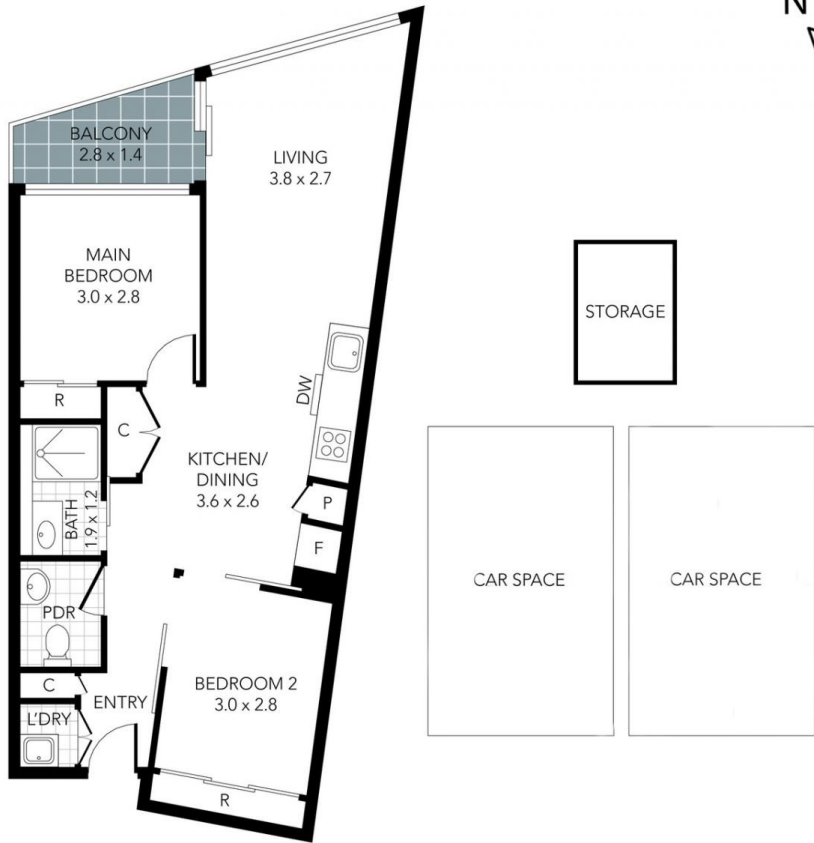
Price : \$529,000
Building Size : 57 sqm
View : <https://www.innerrealestate.com.au/sale/vic/inner-city/south-melbourne/residential/apartment/7812736>



Anthony Cimino
+61 3 9804 5551



Annalise Harvey
+61 3 9804 5551



THIS PLAN IS NOT TO SCALE. MEASUREMENTS ARE INDICATIVE AND IN METRES. SITE PLAN REFLECTS APPROXIMATE POSITION OF BUILDINGS ON PROPERTY ONLY AND IS NOT AN ACCURATE REPRESENTATION OF VEGETATION AND OTHER EXTERNAL LANDSCAPE FEATURES. THIS PLAN SHOULD NOT BE RELIED UPON AND INTERESTED PARTIES SHOULD MAKE THEIR OWN ENQUIRIES.