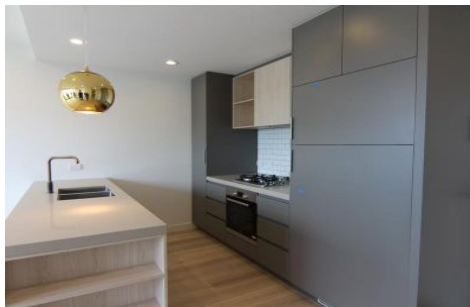




# INNER REAL ESTATE

## NEXTRE



### 209/246 High Street Windsor VIC

1 1 1

Located on the 2nd floor facing onto the magnificent views of Melbourne this iconic light filled apartment offers a beautiful open plan living with split system heating and cooling. Natural timber flooring in living areas leading out to a large functional balcony, large modern kitchen, stone-topped benches and weathered brass tap wear with European appliances with built in fridge.

The apartment also includes in-built Bluetooth speakers for entertaining,

Car space (stacker) & storage cage located in the basement

With sprawling parks, the Prahran markets and Chapel Street's fashion precinct all within a few hundred meters walk of your front door, you're immersed in it all, The

**View :** <https://www.innerrealestate.com.au/lease/vic/inner-city/windsor/residential/apartment/7838887>



**Tim Bush**  
+61 3 9804 5551



**Kayani Shahzeb**  
+61 3 9804 5551