

208/130 Dudley Street West Melbourne VIC

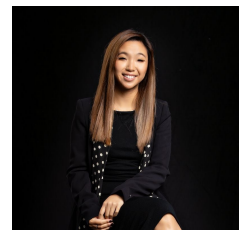
1 1

Ikebana is a stunning contemporary architecturally designed Japanese-inspired development located on the edge of the Melbourne CBD perfectly placed to enjoy the excitement of the city from a place of tranquillity. This apartment features a full kitchen, modern bathroom, a study nook, bedroom with built in wardrobes, combined lounge/dining room with timber floors and balcony. Ikebana is located just 100 m from Flagstaff Gardens, 400m to North Melbourne and Flagstaff Train Stations, 200m to the CBD and Queen Victoria Markets, Melbourne University and just 200m from the Docklands

View : <https://www.innerrealestate.com.au/lease/vic/inner-city/west-melbourne/residential/apartment/7843283>



Tim Bush
+61 3 9804 5551



Hayley Tran
+61 3 9804 5551

****GENERIC PHOTOS****