



INNER REAL ESTATE

NEXTRE



2C Larbert Road Noble Park VIC

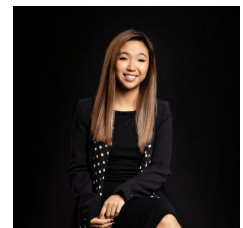
3 1 1

Stunning townhouse contains 3 good sized bedrooms all with built in robes, stunning kitchen that overlooks meals area with gas cooking, ducted heating, evaporative cooling, downstairs powder room, separate shower, bath and toilet to main bathroom, alarm system, enclosed courtyard with water tank and single remote garage. in an ideal location close to Noble Park Train Station and Shops. T

View : <https://www.innerrealestate.com.au/lease/vic/south-east/noble-park/residential/townhouse/7866047>



Tim Bush
+61 3 9804 5551



Hayley Tran
+61 3 9804 5551