



INNER REAL ESTATE NEXTRE



1005/499 St Kilda Road Melbourne VIC

2 2 2

From the moment you walk into the Fawkner you are met by quality, greeted by the 24 hour concierge, you will pass the two designer gas fire places in the marble entrance foyer and up the lift to your large executive residence.

The quality continues inside your apartment with high end appliances, including Gaggenau oven and stove, Neff Dishwasher and integrated Liebherr Fridge. The apartment includes open plan living/ dining area with floor to ceiling windows fitted with quality roller blinds, further leading to your private balcony overlooking breathtaking views of parkland and bay. Spacious bedroom with natural light and bountiful amounts of wardrobe space. Sparkling central bathroom with functional storage and shower. Full size laundry room with ample space for washing machine and dryer. Enjoy the additional features which include reverse cycle air conditioning/heating, studio lighting and secure

View : <https://www.innerrealestate.com.au/lease/vic/inner-city/melbourne/residential/apartment/7875350>

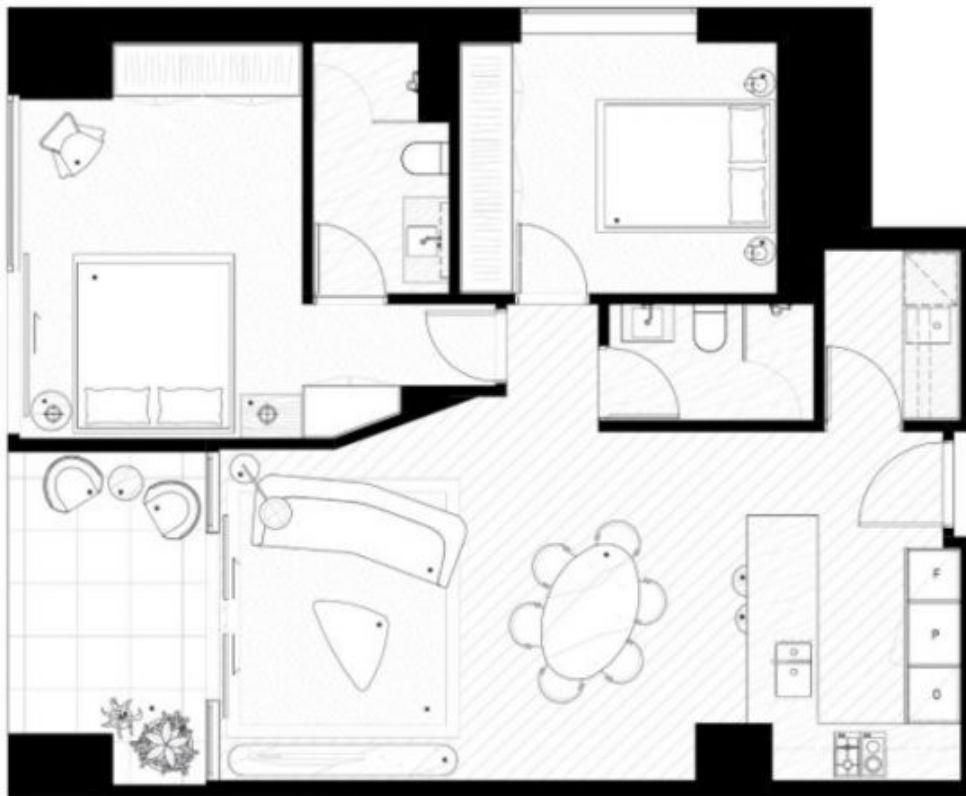


Tim Bush
+61 3 9804 5551



Kayani Shahzeb
+61 3 9804 5551

<https://www.innerrealestate.com.au>



0m 1m 2m 3m 4m 5m

No floor plan is indicative only. Changes may be made during construction, subject to approval and specifications are subject to change with approvals of the Council of State. The furniture shown with any size and should not be taken to indicate the exact position, TV connection points and the like. Bathrooms, lawns and structures are not detailed.

No is measured to the outside face of all external enclosing external face of all corridor walls and to the centreline of all other calculations are based on the Project Survey of Australia.

TYPE H.0

2 BEDROOMS
2 BATHROOMS

APARTMENTS

119	219	319	419	519	619
705	805	905	1005	1105	1205
1305	1405	1505	1605	1705	

TOTAL 91.1m²

INTERNAL	82.4m ²
EXTERNAL	8.7m ²

K. P. D. O.