



INNER REAL ESTATE

NEXTRE



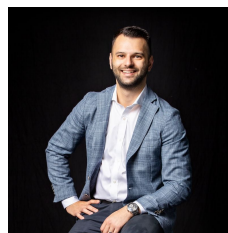
801/35 Albert Road Melbourne VIC

2  1  1 

Infused with sunlight and a stylish aesthetic, this corner apartment conveys a streamlined ambience with the open plan living, dining and kitchen relishing windows on two sides and a fabulous connection out onto a wraparound balcony for outdoor pleasure. A lifestyle jewel in the 'Emerald' building, the residence is perfect for executives, investors or savvy buyers dreaming of a carefree life where spectacular views can be enjoyed. Brilliantly set only footsteps from Albert Park Lake for daily strolls, whilst close to South Melbourne Market, Fawkner Park, Botanic Gardens, NGV, transport and the CBD.

Price : \$639,000

View : <https://www.innerrealestate.com.au/sale/vic/inner-city/melbourne/residential/apartment/7875699>



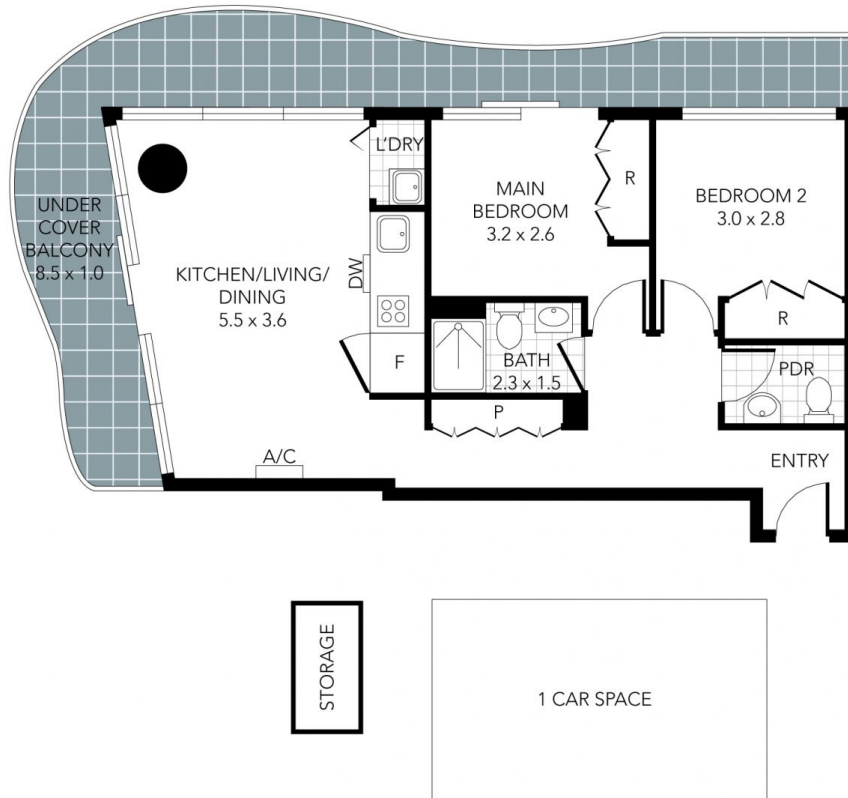
Anthony Cimino
+61 3 9804 5551



Jonathan Mallas
+61 3 9804 5551

- ? Two robed bedrooms, each with large windows
- ? Crisp white bathroom with toilet
- ? Powder room for added convenience
- ? Open plan living and dining featuring modern floorboards
- ? Kitchen adorned with gas stove, oven and dishwasher

<https://www.innerrealestate.com.au>



THIS PLAN IS NOT TO SCALE. MEASUREMENTS ARE INDICATIVE AND IN METRES. SITE PLAN REFLECTS APPROXIMATE POSITION OF BUILDINGS ON PROPERTY ONLY AND IS NOT AN ACCURATE REPRESENTATION OF VEGETATION AND OTHER EXTERNAL LANDSCAPE FEATURES. THIS PLAN SHOULD NOT BE RELIED UPON AND INTERESTED PARTIES SHOULD MAKE THEIR OWN ENQUIRIES.